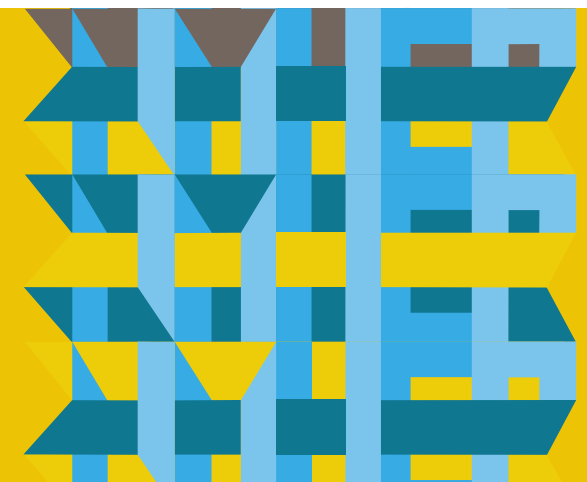


Welcome

Introduction to Health Impact Assessment Webinar



How to Interact Today with ZOOM Webinar

This webinar is being recorded

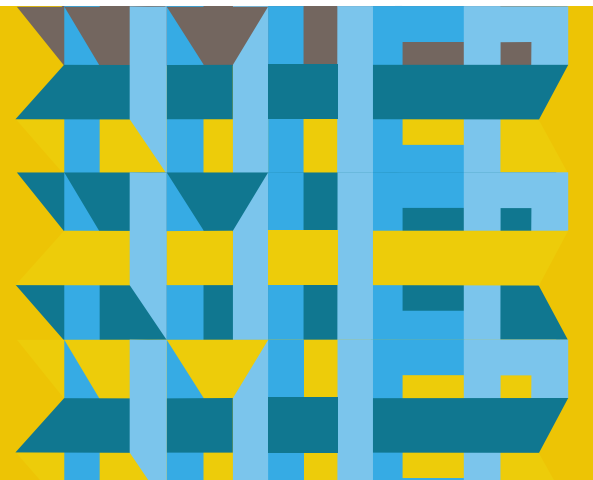
There are many cool interactive functions for today's presentation!

4 buttons on your screen - test audio, Q & A, chat, raise hand.

If you are having technical issues with audio, try the test audio function.

Please note: as a webinar participant, you do not have audio/video ability until you are called on.

To be called on, simply raise your virtual hand.



How to Interact Today with ZOOM Webinar

4 buttons in the top left corner of your screen - test audio, Q & A, chat, raise hand.

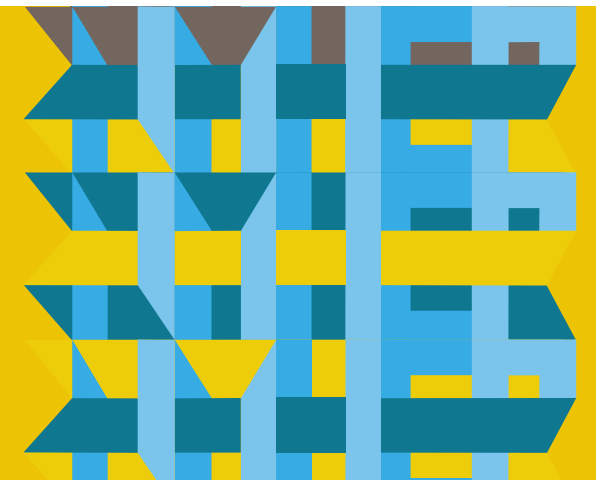
We will call on you.... this may take a moment or two as it switches over.

The Q & A box is great place to put a question to be answered, especially if you don't care to be called on.

The Chat box: is great for any comments, to let us know something isn't working , to say hello, feel to introduce yourself by organization or community, you can also talk amongst yourselves with the private chat.

There really is no wrong way to interact.

Please share, because we want to hear from you!



Meet the HEP team



Jessi

Grants
& Capacity Building
Strategist



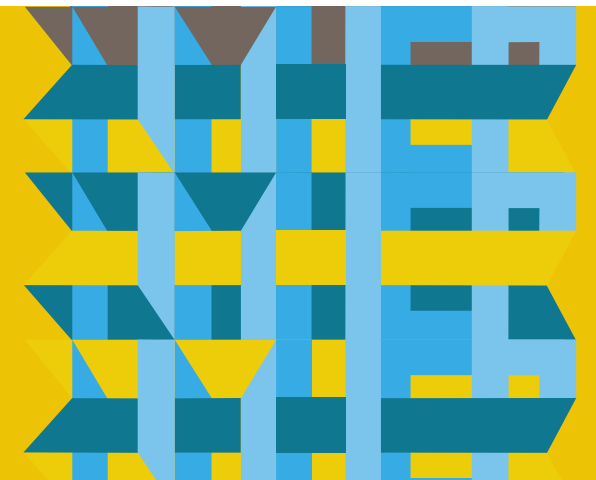
Jinelle

Creative
Logistics
& Operations
Associate

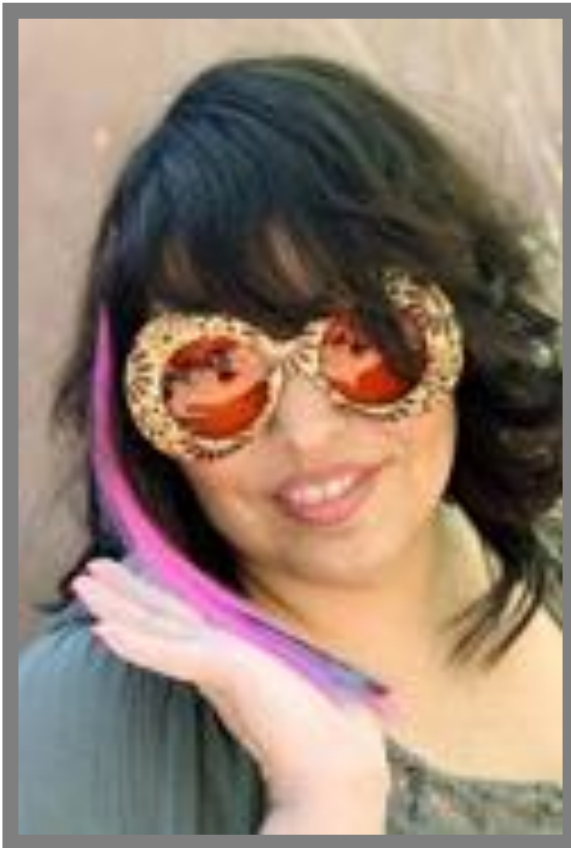


David

Communications
& Marketing
Associate



Meet the HIA Technical Assistance Providers



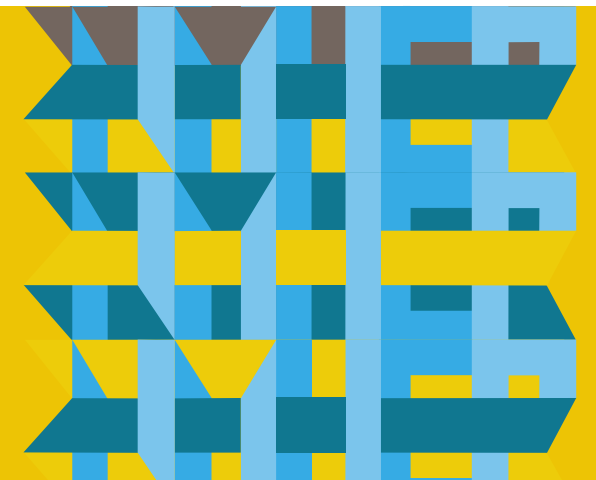
Yolanda



Christina



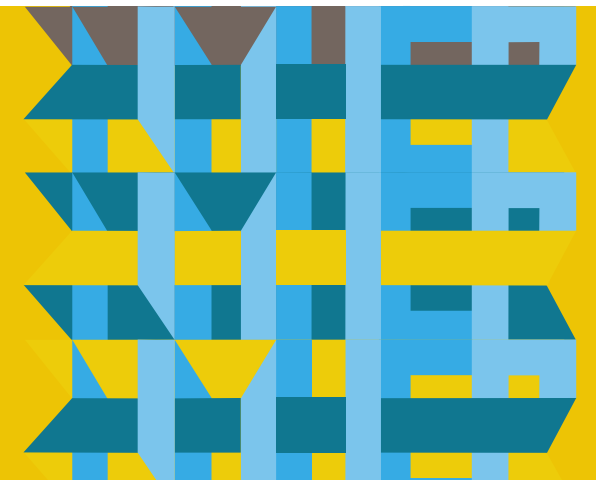
Richard



Thank you to Elsa our guest speaker and to Human Impact Partners for their ongoing guidance and training materials!



Elsa with the McKinley Workers Justice Coalition

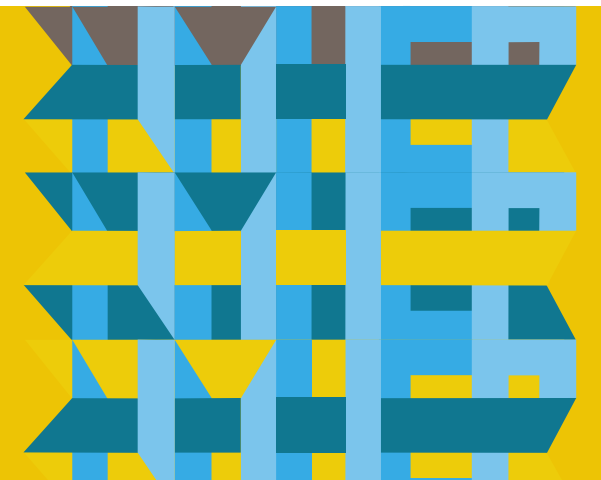


Welcome Participants



Poll Question:

On a scale of 0-5, how
familiar are you with HIA?



Introduction to HIA Agenda

Slide 9 – About HEP

Slide 14 – Introduction to Health Impact Assessment

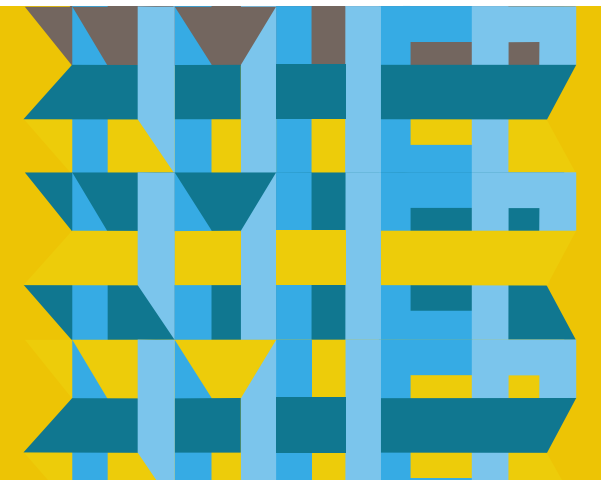
Slide 21 – Community / Stakeholder Engagement

Slide 25 – Sample HIA Project

Slide 27 – Screening

Slide 33 – Work plan

Slide 35 – Wrap Up



About Us

New Mexico Health Equity Partnership, an initiative at the Santa Fe Community Foundation founded in 2012



Shared Value: Every NM should have the opportunity to lead a healthy life and have a say in decisions that impact their communities and lives.



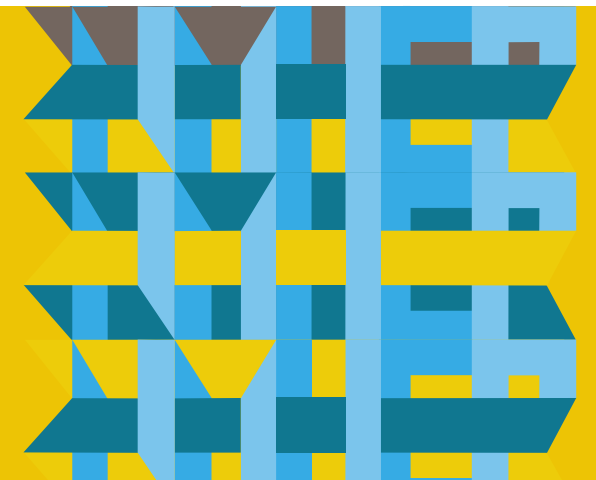
Purpose: Train groups on how to make a more compelling case to decision makers on issues they care about that affect their health.



Tool: We provide financial resources, training and coaching to support communities to complete Health Impact Assessments.



Approach: We support community leaders to be their own champions and ensure residents have a real voice and seat at the table.



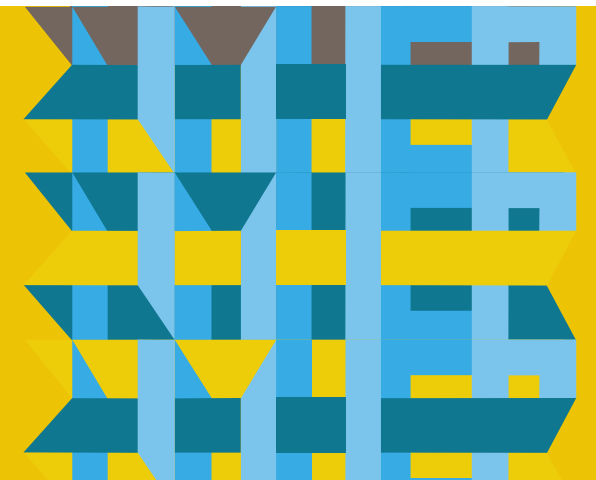
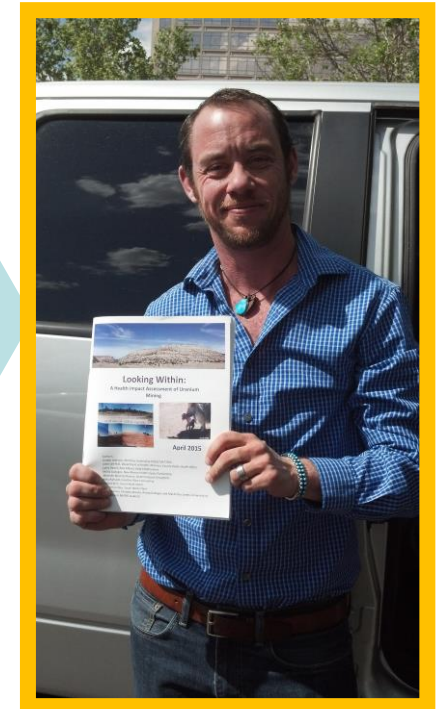
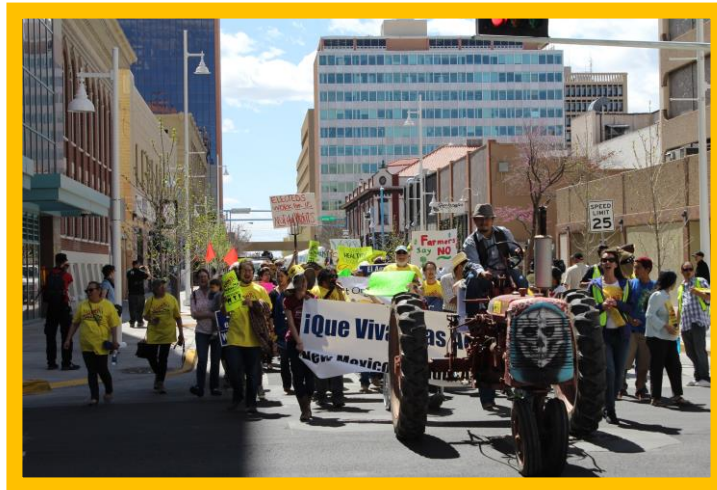
What HIA has made possible

Strengthened leadership and skills

New alliances and relationships among
diverse groups

Community recommendations being
adopted by decision makers

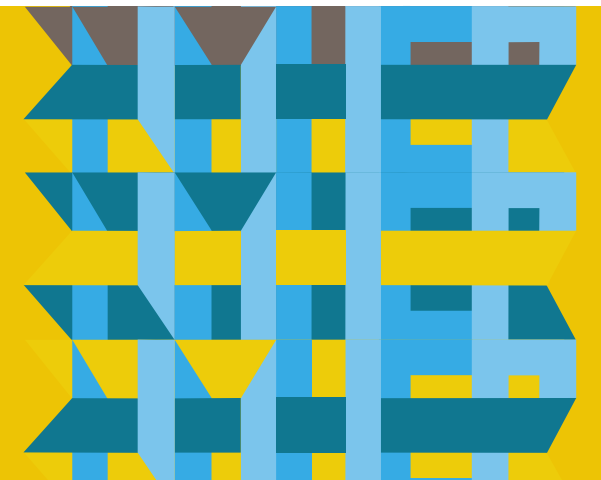
Common vocabulary for action and
learning



Participants who participated in HIA trainings appreciated...

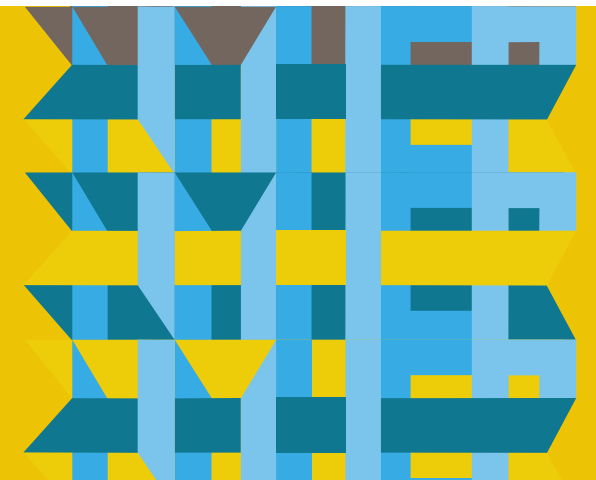


- *the information about health, how to organize around health issues*
- *learning about New Mexico HIAs that have been completed*
- *the push to think outside the box and the introduction of new concepts in HIAs*
 - *learning the process and seeing examples.*
 - *Hearing other people's ideas and work---& results!!*
 - *the interactions, sharing of plans, and guidance of the facilitator*



HIA Funding Announcement

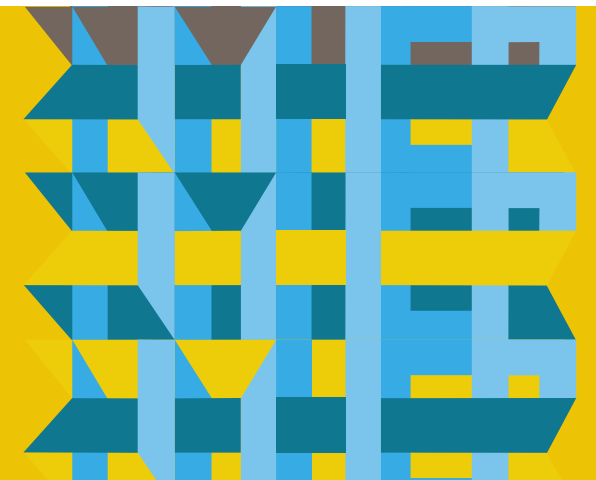
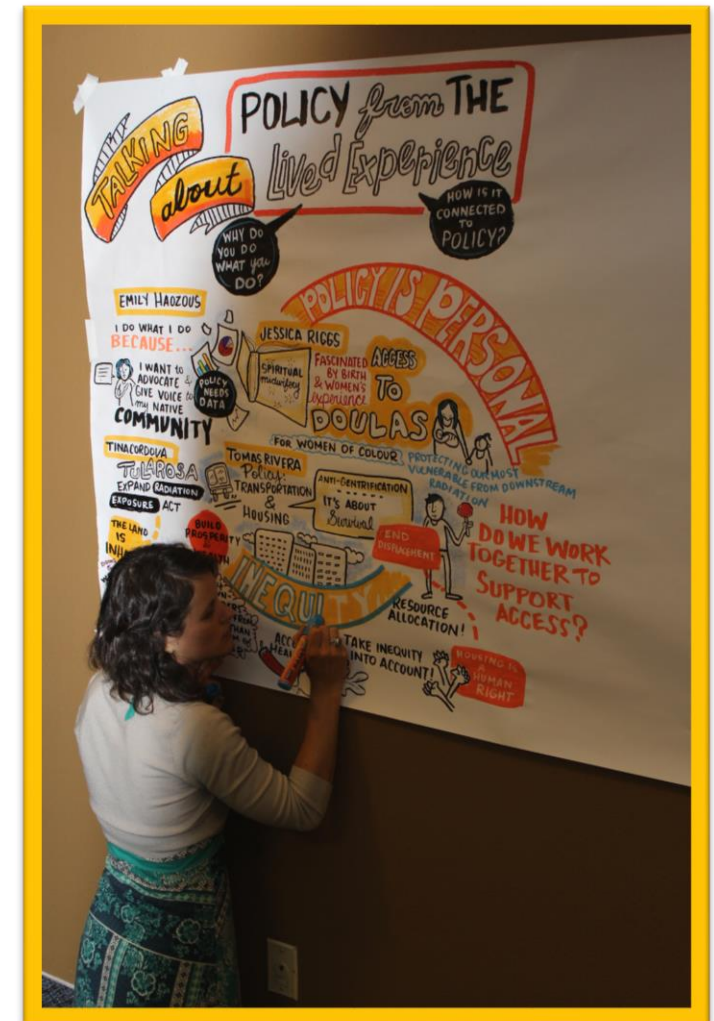
- Support for two new HIAs in 2017, including up to \$35,000 in funding for each HIA, a webinar series, in-person training, and ongoing coaching provided by HEP technical assistance providers and HEP staff.
- HEP is prioritizing applicants working in **rural, tribal, refugee, and immigrant communities** whose HIA will positively impact the health of vulnerable children.
- Applications (cover page, screening worksheet, work plan, and financials) will be accepted until **March 31, 2017**.



Webinar Purpose



Gain a better understanding of HIA and how to complete the first step (screening)



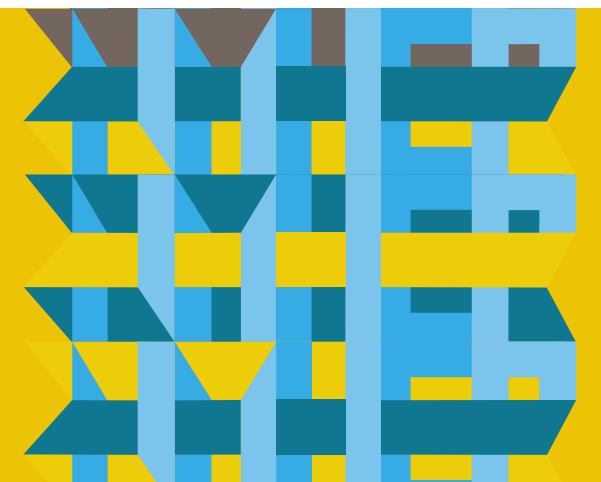
Introduction to HIA

What is health?

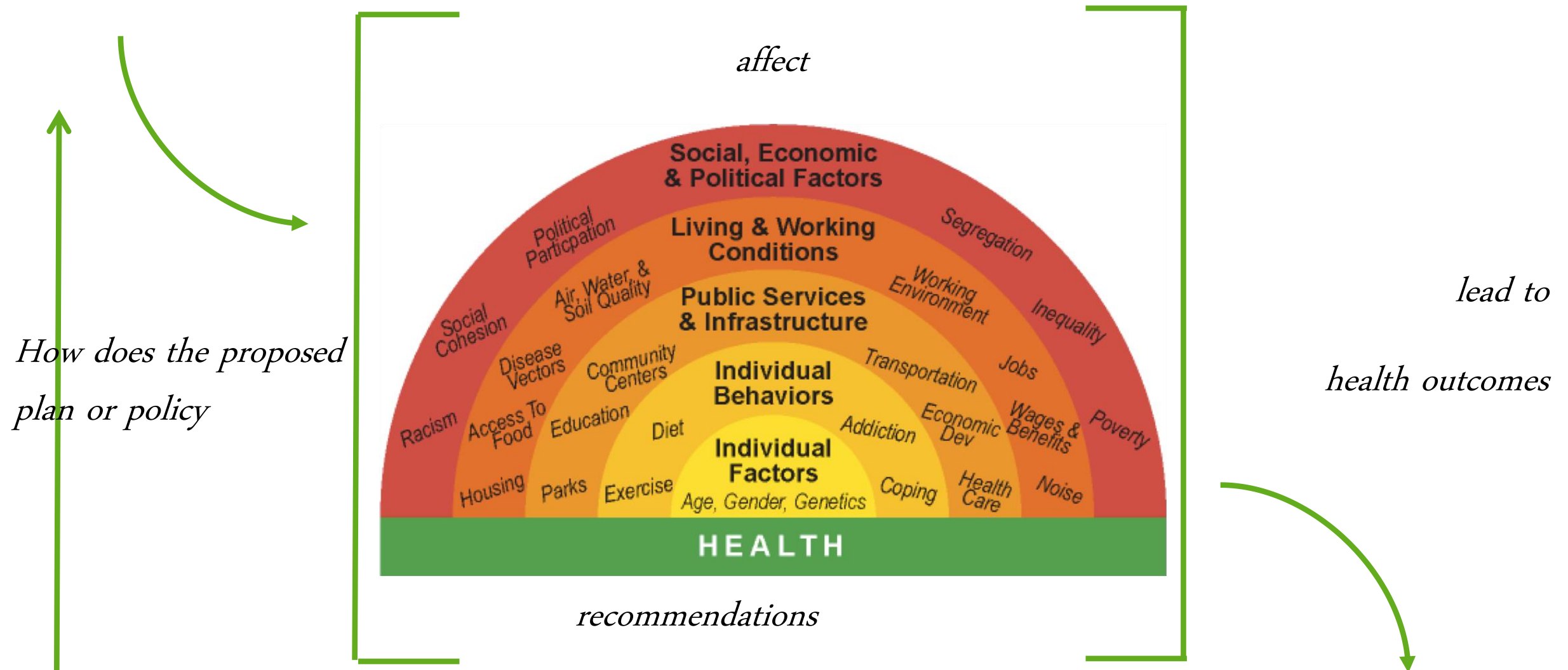
Health is a state of complete physical, mental and social well-being and not merely the absence of disease or infirmity

World Health Organization

Many indigenous cultures extend the concept of health to include physical, mental, emotion, and spiritual dimensions, and define healthy living as being in harmony with the spirit world, with their community and with the land.



HIA Addresses Determinants of Health

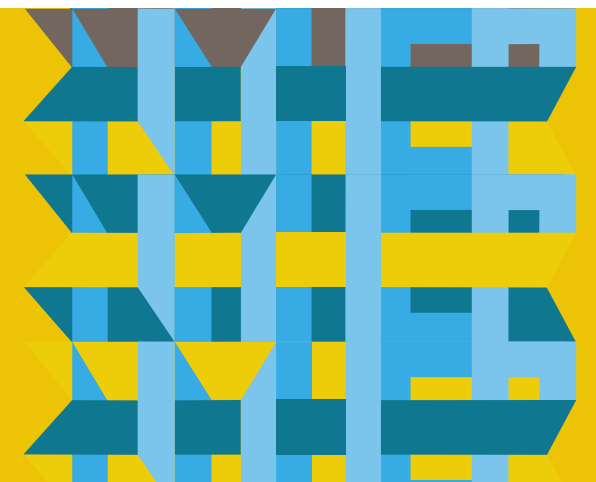


HIA Definition

Health Impact Assessment is a systematic process that:

- Uses a variety of data sources and analytic methods
- Considers input from community stakeholders
- Determines the potential effects of a proposed policy or plan on the health of a population
- Determines the distribution of those effects within the population
- Provides recommendations on monitoring and managing those effects

National Research Council of the National Academies, 2011



Through HIA report and communications HIA Purpose

Judge health effects of a proposed policy or plan

Highlight health inequities

Raise awareness among decision makers and the public

Make health impacts
more explicit

Provide recommendations

Through the HIA process

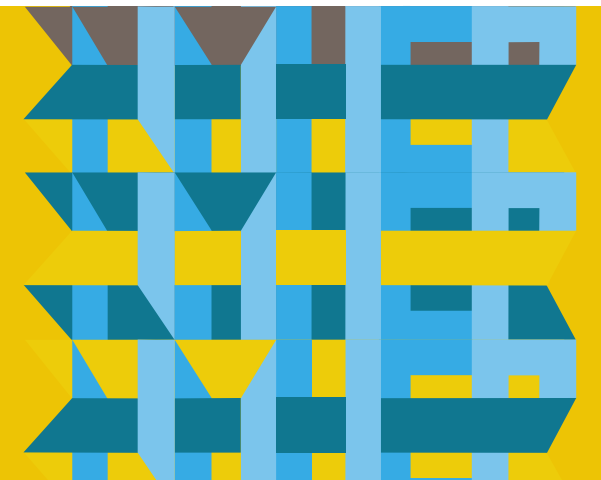
Recognize lived experience

Engage & build community power and
leadership

Build relationships, alliances and collaborations

Improve the evidence

Improve transparency in decision making



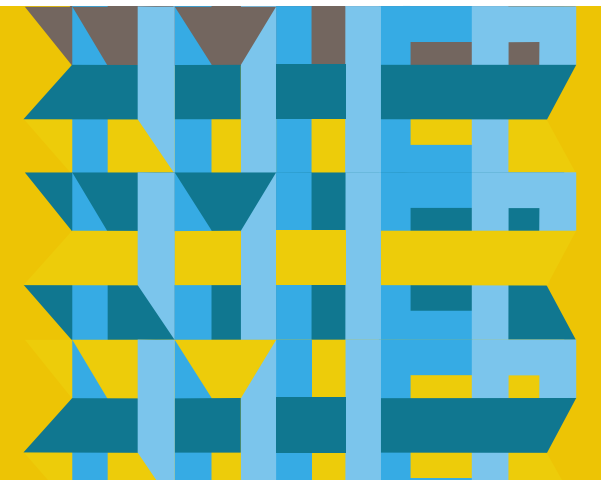
When is HIA carried out?



HIA is used to assess a defined policy or plan.

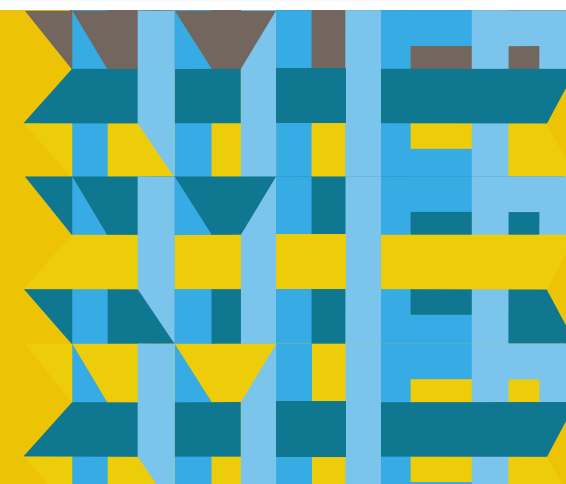
The purpose of HIA is to inform decision-makers.

An HIA is most often carried out prospectively - before the decision is made or the policy is implemented.



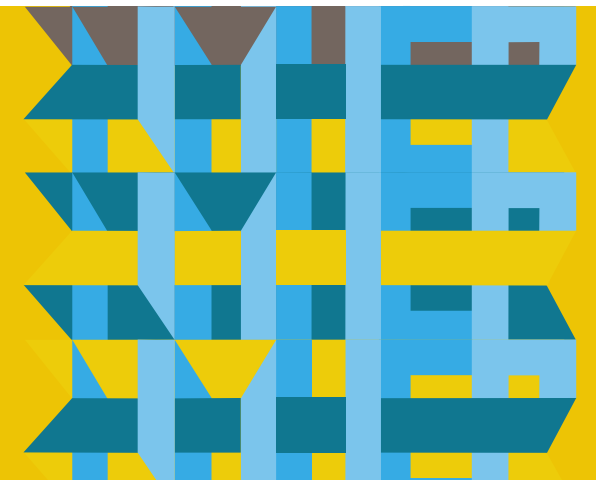
Principles and Values of HIA

HIA Principle	An HIA should . . .
Democracy	Involve and engage the public, and inform and influence decision-makers
Equity	Engage community members most directly impacted by the issues in leadership roles throughout the HIA process; consider distribution of health impacts; and pay attention to vulnerable groups and recommend ways to improve proposed decisions for affected groups
Sustainable Development	Judge short- and long-term impacts of a proposal
Ethical Use of Evidence	Use evidence to judge impacts and inform recommendations, not set to support or refute a proposal; be rigorous and transparent
Comprehensive Approach to Health	Be guided by the wider determinants of health



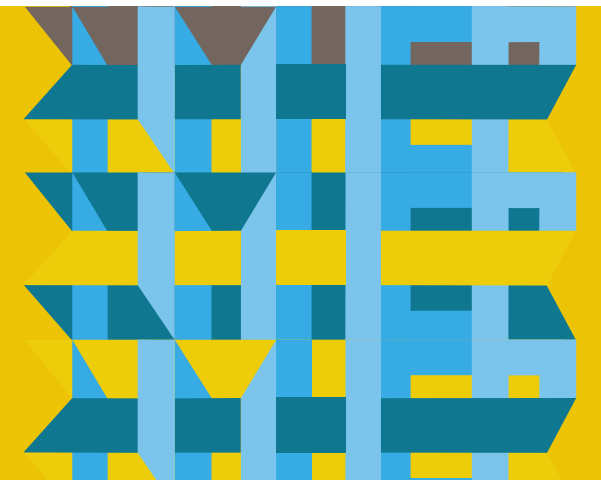
HIA Steps

HIA Step	Description
Screening	Determines the need and value of an HIA and begin designing a work plan
Scoping	Determines goals, which 2-3 health impacts to evaluate, and methods for analysis
Assessment	Provides: 1) a profile of existing health conditions 2) evaluation of potential health impacts
Recommendations	Provide strategies to manage adverse health impacts and maximize benefits to health
Reporting	Includes: 1) development of the HIA report 2) communication of findings & recommendations
Evaluation & Monitoring	Tracks and evaluates: 1) the process of conducting the HIA 2) impacts on decision-making processes and implementation of the decision 3) impacts of the decision on health outcomes



Community Stakeholder Engagement

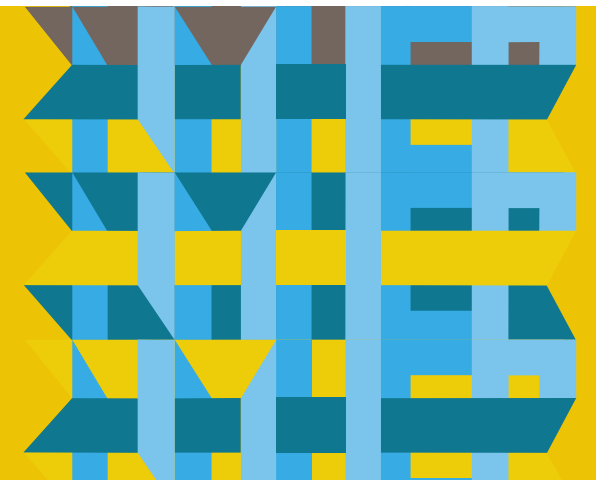
A diverse group of community stakeholders, including representatives from impacted communities, should be involved throughout the HIA process



Community Stakeholder Engagement



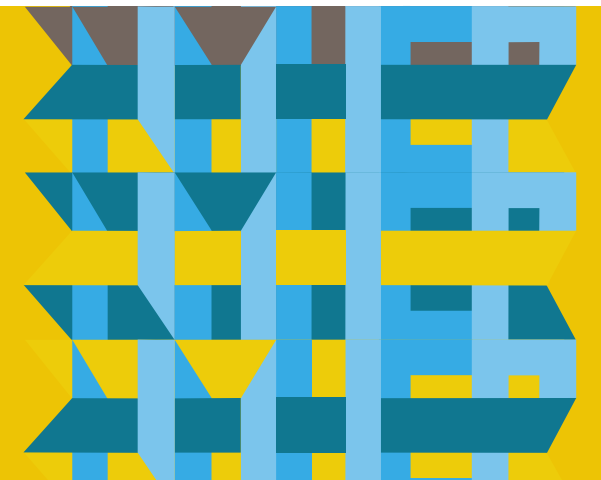
Groups involved in conducting HIA should be assigned roles that best match their skills and capacity



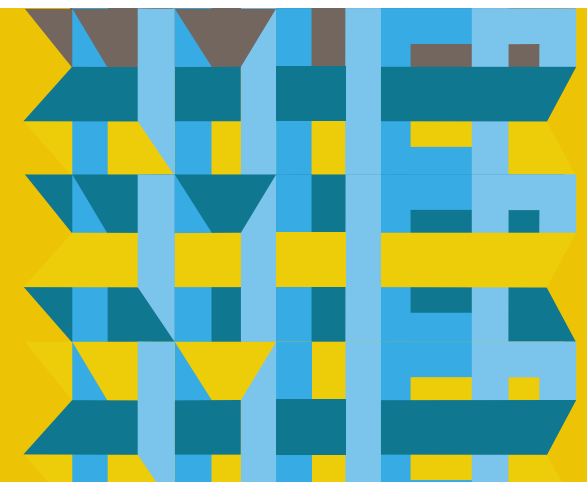
Community Stakeholder Engagement



Resources should be allocated to ensure that community members meaningfully participate in the process

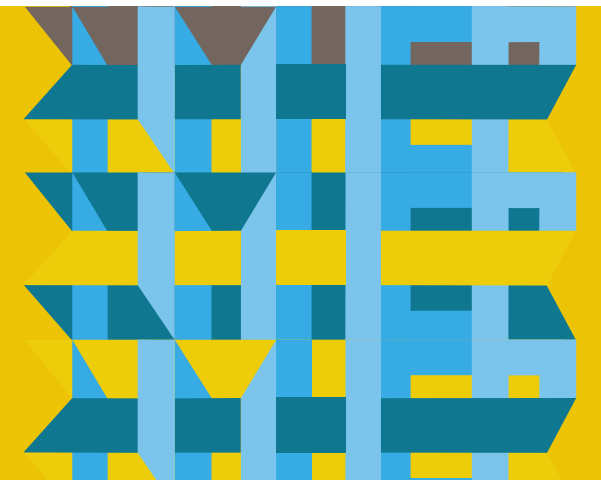


Community Engagement and Empowerment

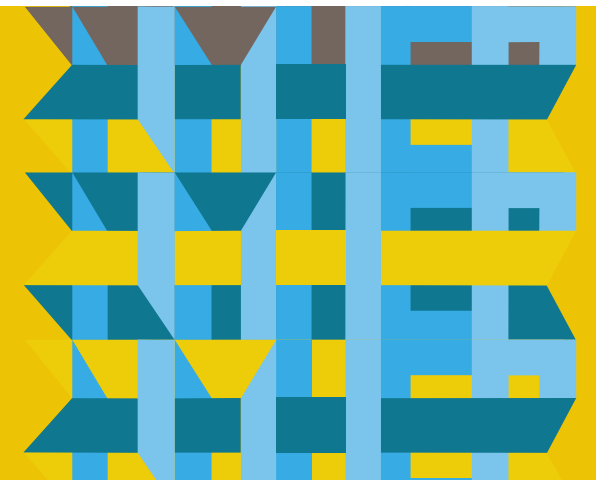


The Health Impacts of Wage Theft on Latino Immigrant and Native American Workers in Gallup

- Proposed Policy Topic and Community Concerns
- Health Determinants (economic security, discrimination, and workplace health and safety)
- Community Stakeholder Engagement
- New Partnerships Developed
- Information Gathering
- Dissemination and Communications

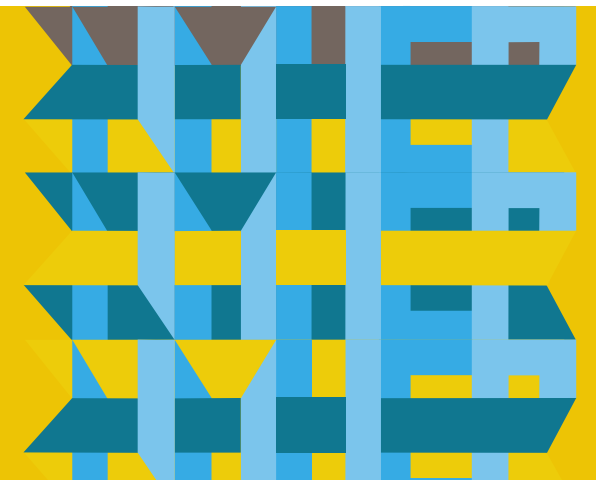


Questions?

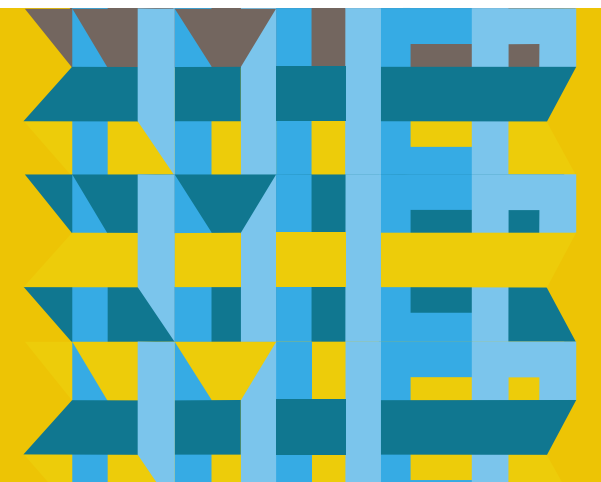
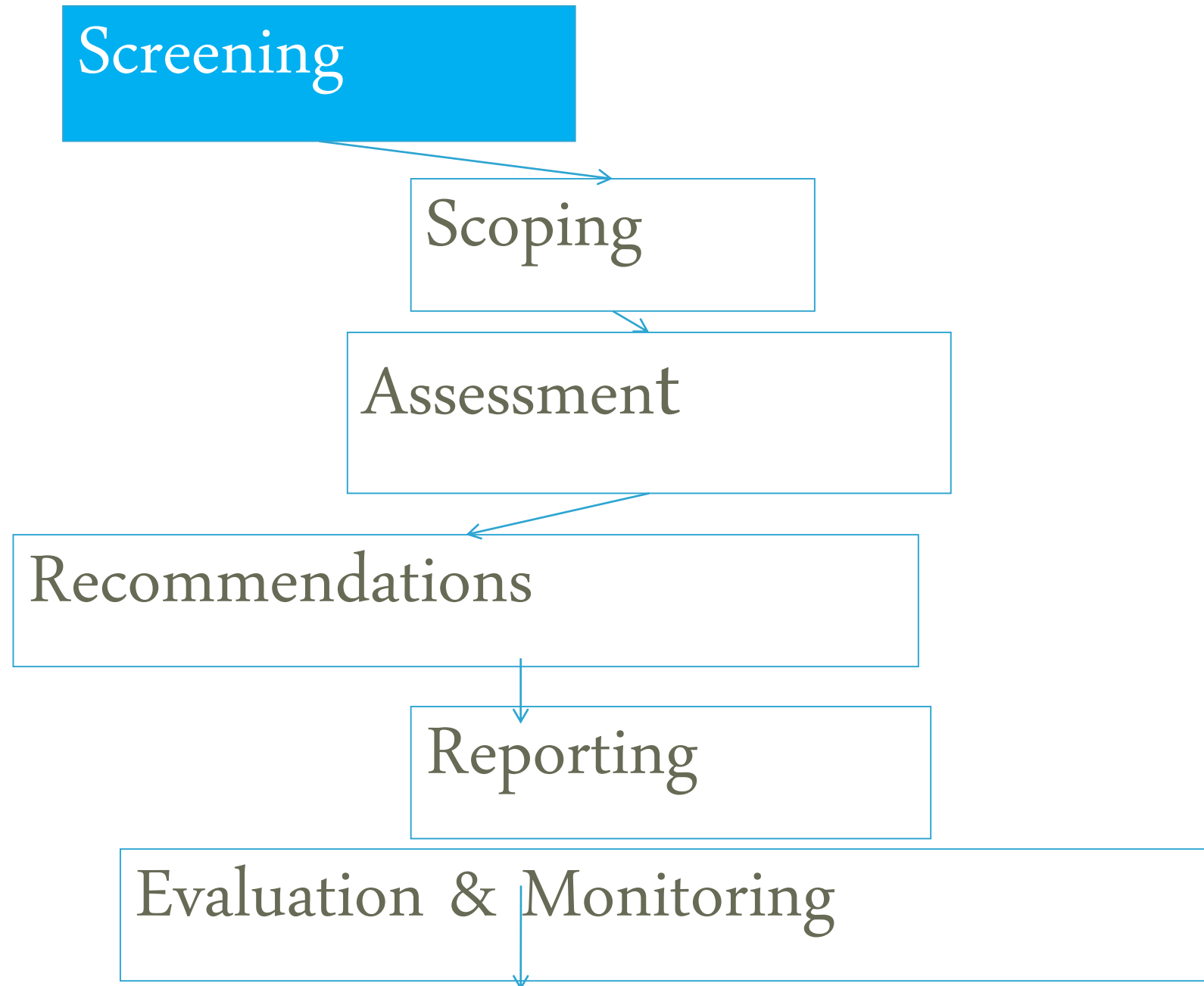


HIA Steps

HIA Step	Description
Screening	Determines the need and value of an HIA
Scoping	Determines which health impacts to evaluate, methods for analysis, and a workplan
Assessment	Provides: 1) a profile of existing health conditions 2) evaluation of potential health impacts
Recommendations	Provide strategies to manage adverse health impacts and maximize benefits to health
Reporting	Includes: 1) development of the HIA report 2) communication of findings & recommendations
Evaluation & Monitoring	Tracks and evaluates: 1) the process of conducting the HIA 2) impacts on decision-making processes and implementation of the decision 3) impacts of the decision on health outcomes



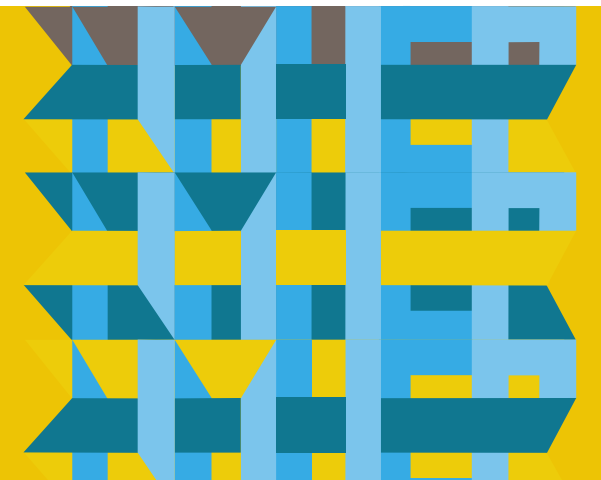
The HIA Process



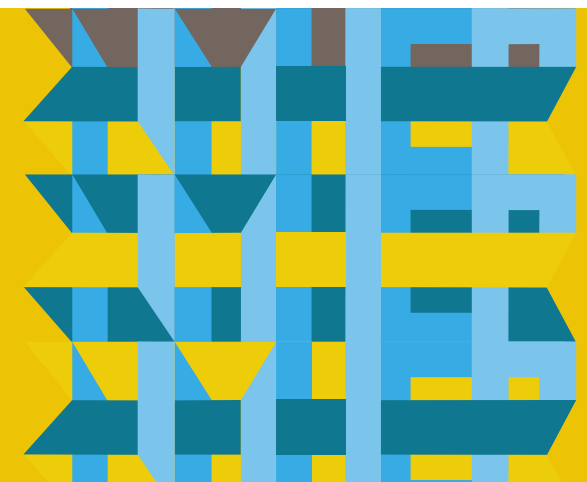
Step 1: Screening

Objective

To decide whether a HIA is feasible, timely, and would add value to the decision-making process.



What potential HIA policy topics do you have?



Screening Worksheet



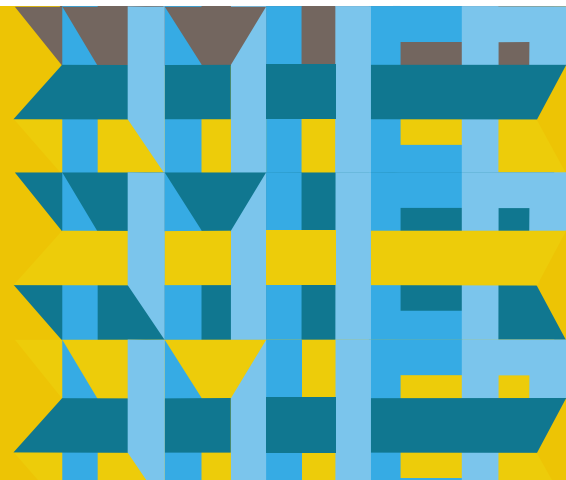
NEW MEXICO HEALTH EQUITY PARTNERSHIP

Screening Worksheet

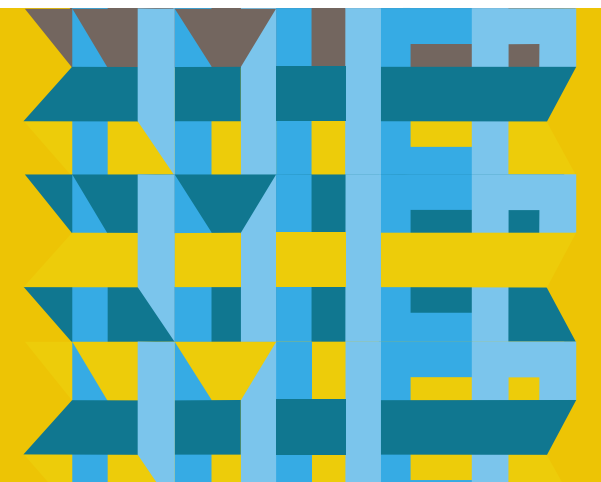
Screening is the first step of Health Impact Assessment. Screening involves determining whether a Health Impact Assessment is feasible, timely, and would add value to the decision-making process.

Questions	Responses and Supporting Facts
Proposed Policy and Decision <ul style="list-style-type: none"> What is the proposed policy or plan the HIA would inform proposed? Who are the decision makers determining the proposed policy or plan? When will the proposed decision be made? How open are the decision makers to input and recommendations from community stakeholders? 	
Health Determinants (social, economic and environmental factors that impact health) <ul style="list-style-type: none"> How would the health of rural, tribal, refugee and immigrant communities be impacted by the proposed policy or plan? Which 2-3 key health determinants would the decision affect? How are these 2-3 health determinants of health linked to childhood (0-8) health outcomes? Are the potential health impacts already being considered as part of the decision-making process? 	
Gathering Information <ul style="list-style-type: none"> What evidence and research exists to analyze the health impacts of the decision? What types of additional data will need to be collected? What might be the most effective methods for collecting data? 	
Community Mobilization <ul style="list-style-type: none"> Have community concerns about the health impacts of the decision been voiced or documented? What momentum is there behind this issue? Which communities and organizations have helped to fuel that momentum? How will the HIA leverage the momentum? How will community stakeholders share the findings with stakeholders and decision makers? What methods will be most effective? 	
Key Partnerships <ul style="list-style-type: none"> Who are the key partners that will conduct and develop the HIA? How will community members most impacted by the issue hold leadership roles throughout the process? What community organizing and policy/advocacy groups will be engaged and how? What role might health councils, health organizations, or academic institutions play in the process? 	

Credit: This HIA screening form was initially developed by Human Impact Partners and adapted by the New Mexico Health Equity Partnership.

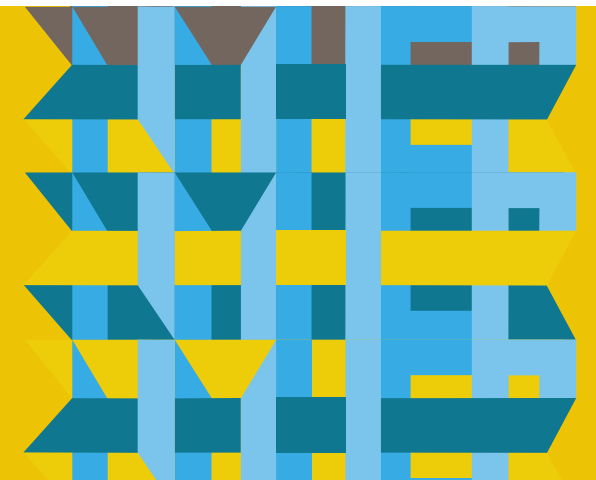


Who are the possible community stakeholder groups and partners you imagine might be involved in each phase of the HIA?

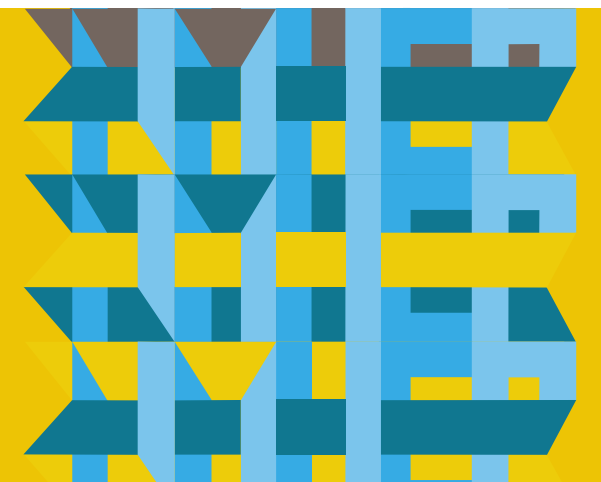


Work plan

WHAT	WHO / NAMES OF ORGS AND INDIVIDUALS
Coordination / Project Management	
Community Engagement	
Research	
Writing	
Media and Communications	
Other stakeholder engagement	
Oversight/leadership <ul style="list-style-type: none">● Steering Committee● Community advisory committee	



Questions?

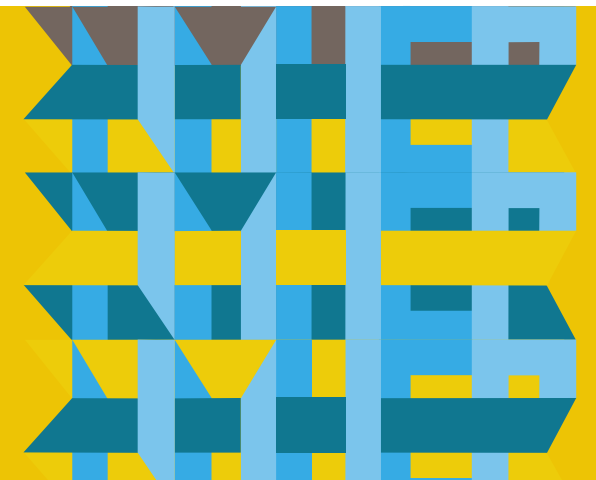


Wrap Up

What happens next?

Please remember to contact Jessi at jjensen@nmhep.org to discuss your HIA ideas in more depth.

Submit your HIA application by **March 31, 2017**. The webinar slides, recording and application (cover page, screening worksheet, work plan, and financials) can be accessed at <http://nmhep.org/resources/hia-resources/>



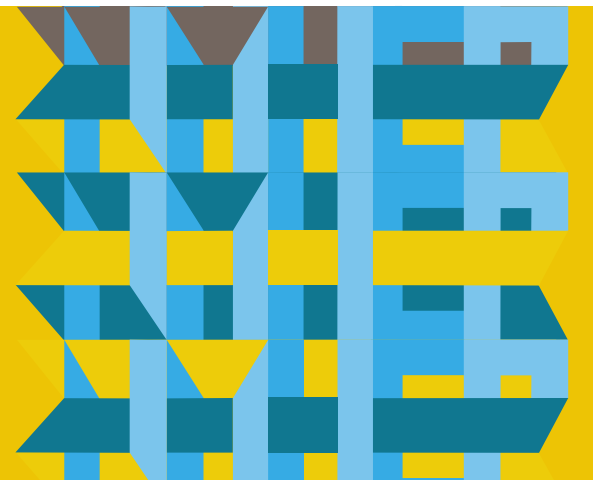
Wrap Up

Where can you find us and learn more?

Sign up to be a HEP member and/or for our newsletter at www.nmhep.org

Follow us on www.facebook.com/NMHEP

Please view HIA reports at <http://nmhep.org/resources/hia-reports/>



Thank you!

