

Welcome

Health Impact Assessment Scoping Webinar



How to Interact Today with ZOOM Webinar

This webinar is being recorded

There are many cool interactive functions for today's presentation!

4 buttons on your screen - test audio, Q & A, chat, raise hand.

If you are having technical issues with audio, try the test audio function.

Please note: as a webinar participant, you do not have audio/video ability until you are called on.

To be called on, simply raise your virtual hand.

How to Interact Today with ZOOM Webinar

4 buttons in the top left corner of your screen - test audio, Q & A, chat, raise hand.

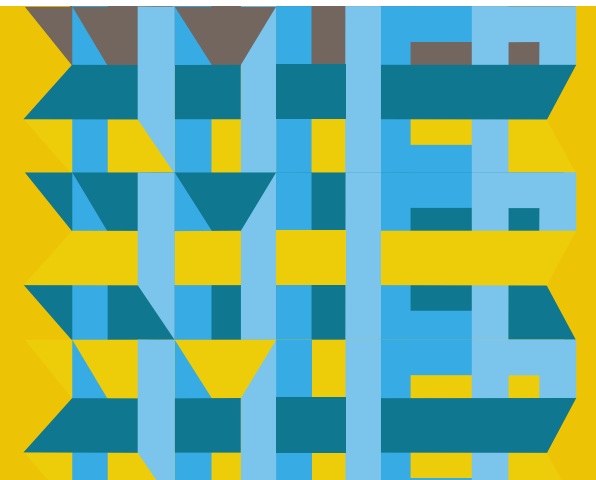
We will call on you.... this may take a moment or two as it switches over.

The Q & A box is great place to put a question to be answered, especially if you don't care to be called on.

The Chat box: is great for any comments, to let us know something isn't working, to say hello, feel to introduce yourself by organization or community, you can also talk amongst yourselves with the private chat.

There really is no wrong way to interact.

Please share, because we want to hear from you!



Introduction to HIA Agenda

Slide 5 – HEP Introduction

Slide 9 – Introduction of HIA Teams

Slide 13 – Scoping Objectives

Slide 17 – Case Study Example

Slide 24 – Scoping Exercises

Slide 37 – Discussion and Questions

Slide 38 – Wrap Up



Meet the HEP team



Jessi

Grants
& Capacity Building
Strategist



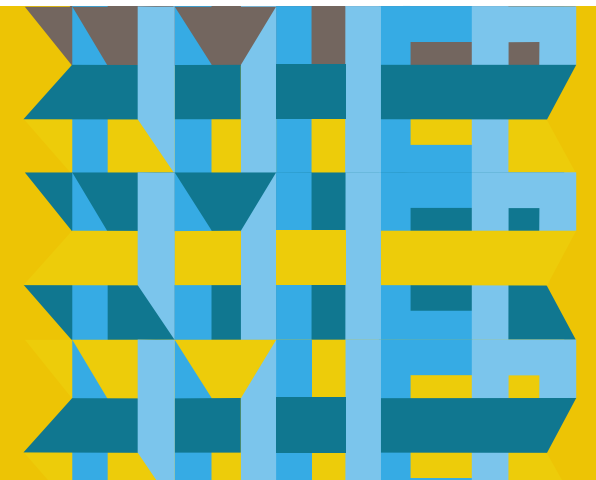
Jinelle

Creative
Logistics
& Operations
Associate



David

Communications
& Marketing
Associate



Meet the HIA Technical Assistance Providers



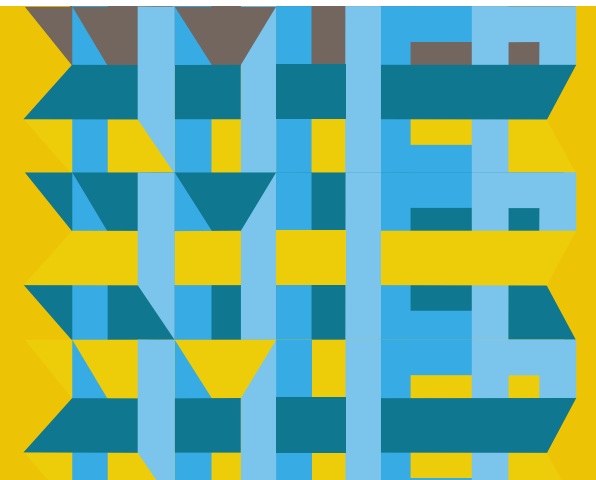
Yolanda



Christina



Richard



About Us

New Mexico Health Equity Partnership, an initiative at the Santa Fe Community Foundation founded in 2012



Shared Value: Every NM should have the opportunity to lead a healthy life and have a say in decisions that impact their communities and lives.



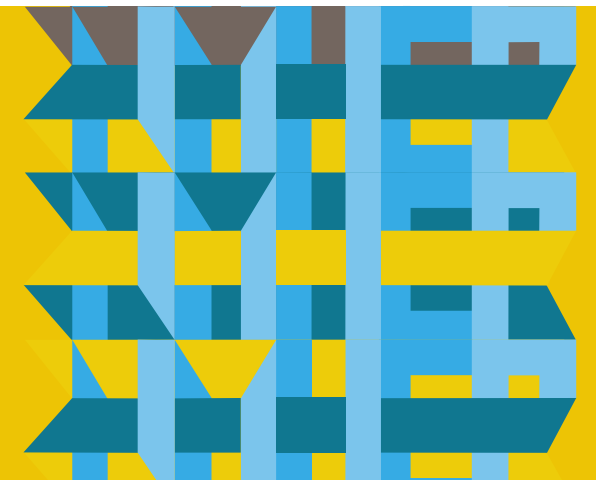
Purpose: Train groups on how to make a more compelling case to decision makers on issues they care about that affect their health.



Tool: We provide financial resources, training and coaching to support communities to complete Health Impact Assessments.



Approach: We support community leaders to be their own champions and ensure residents have a real voice and seat at the table.

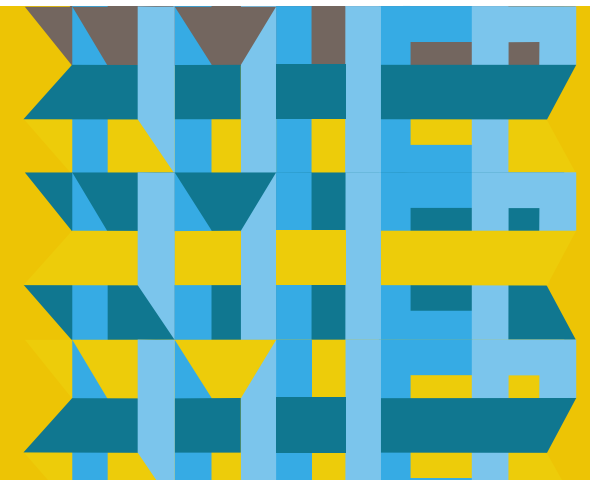


Welcome Participants



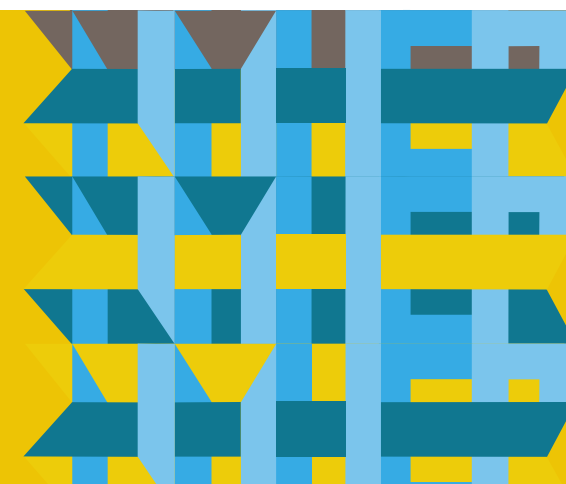
Ice Breaker Question:

If you could send a one word message to yourself as a pre-teen, what would it be?



Welcome HIA Teams

- ***Somos Un Pueblo Unido*** - The health impacts of the collaboration between U.S. Immigration Customs Enforcement (ICE) and local law enforcement on rural and semi-rural immigrant families in San Juan county.
- ***Together for Brothers*** - The health impacts of free bus passes on young men of color, including native, immigrant and refugee youth in the International District and Westgate neighborhoods in Albuquerque.
- ***Global 505*** – The health impacts of language access and how that connects to education, employment and transportation opportunities in refugee and immigrant communities in Albuquerque.



The Health Impacts of the Collaboration between U.S. Immigration Customs Enforcement and Local Law Enforcement on Rural and Semi-rural Immigrant Families

Connection to Health: The HIA will examine the connection between collaboration policies and: 1) family unity, 2) economic security, and 3) access to health and other key services and the link this has to stress, mental and physical health of children between the ages of 0-8.

Partnerships: Somos Un Pueblo Unido will work with its San Juan County affiliate, Familias Unidas and other community partners, including: Sexual Assault Services, Family Crisis Center, and Engaging Latino Communities for Education.

The Health Impacts of Free Bus Passes on Young Men of Color in the International District and Westgate Neighborhoods in Albuquerque

Connections to Health: The HIA will assess the connection between what free bus passes for young people would mean for increased access to: 1) recreation and other activities, 2) educational opportunities, 3) employment opportunities and 4) walking and other healthy habits and the connection this has to emotional, mental and physical health outcomes.

Partnership: Together for Brothers (T4B), an organization led by young men of color, will work with other community organizations (i.e. International District Healthy Communities Coalition, Juntos, etc.) in Bernalillo County. The HIA will provide intentional opportunities for young men of color, ages 14-24 to strengthen their leadership, collect data through motivational interviews with riders of public transit, and educate decision makers on issues of importance to them utilizing art, infographics, and short videos.

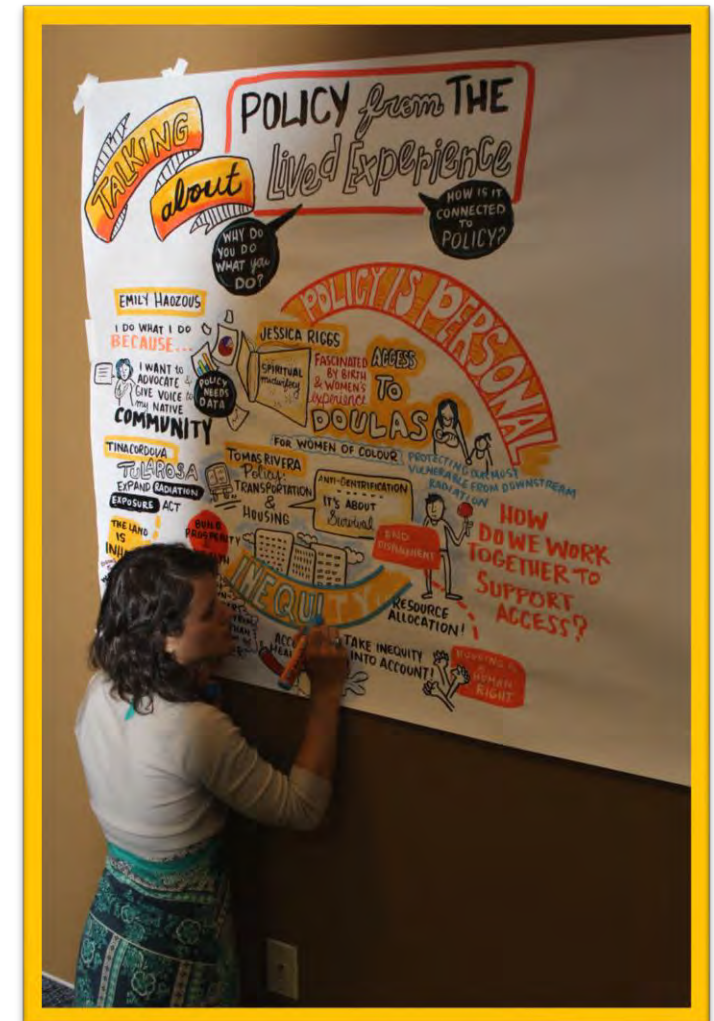
The Health Impacts of Language Access in Refugee and Immigrant Communities

Connections to Health: The HIA will assess the connection between what language access for refugees and immigrants would mean for increased access to quality: 1) education, 2) employment, and 3) transportation.

Partnerships: New Mexico Asian Family Center's Global 505 network, which unites voices representing Asian, African, Latino, and Muslim communities across Albuquerque has held two HIA convening using art and play as a medium to hone in on their specific HIA topic. Global 505 partners that participated in the first two events included Juntos: Our Air, Our Water, Catholic Charities, Women's Global Pathways, and Refugee Well Being Project.

Webinar Purpose

Review the
second step of
HIA, Scoping.



HIA Steps

HIA Step	Description
Screening	Determines the need and value of an HIA
Scoping	Determines which health impacts to evaluate, methods for analysis, and a workplan
Assessment	Provides: 1) a profile of existing health conditions 2) evaluation of potential health impacts
Recommendations	Provide strategies to manage adverse health impacts and maximize benefits to health
Reporting	Includes: 1) development of the HIA report 2) communication of findings & recommendations
Evaluation & Monitoring	Tracks and evaluates: 1) the process of conducting the HIA 2) impacts on decision-making processes and implementation of the decision 3) impacts of the decision on health outcomes

Step 2: Scoping

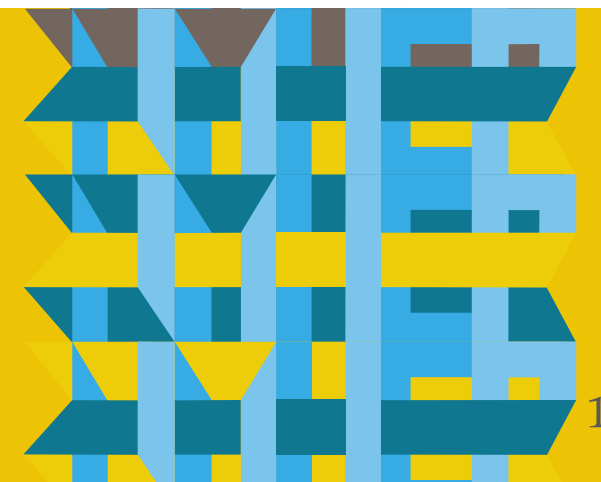
Objective

To create a plan for conducting a HIA that defines priority issues, research questions and methods.

Developing an HIA Scope

- ☐ Develop a project timeline and work plan
- ☐ Develop a plan for stakeholder engagement and identify roles for stakeholders
- ☐ Determine HIA goals, health determinants, and develop a 1 page case study
- ☐ Identify vulnerable populations
- ☐ Identify geographic and temporal boundaries for the assessment
- ☐ Confirm health determinants and identify health outcomes the proposal will impact
- ☐ Develop pathway diagrams
- ☐ Generate research questions
- ☐ Identify preliminary data sources and methods
- ☐ Consider how HIA will be communicated and reported

Case Study Sample Project



Doña Ana County Scoping

Through the scoping process the HIA team decided that the HIA would focus on analyzing how proposed changes to the county's comprehensive plan could impact health by changing the following conditions (health determinants):

Access to parks and trails

Community cohesion

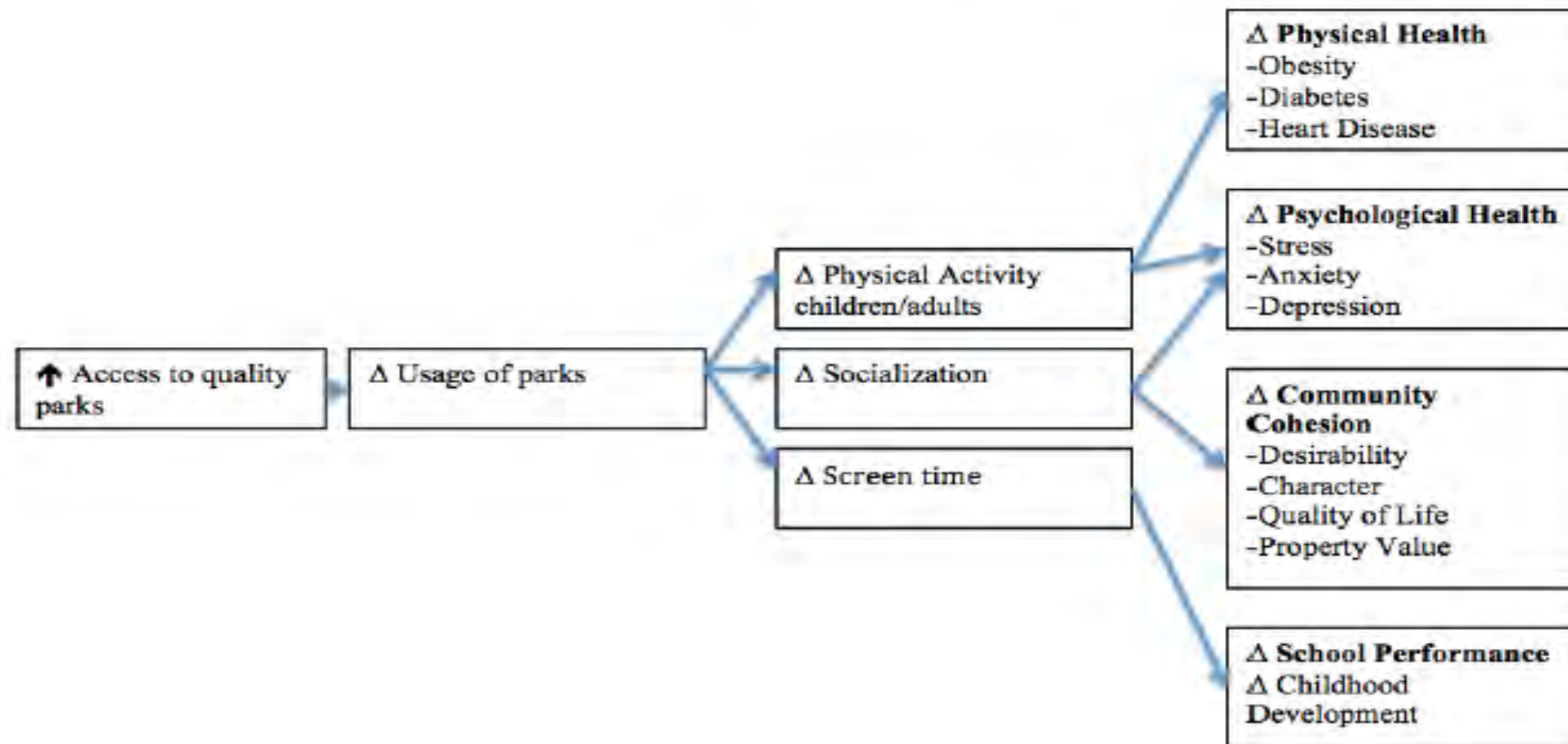
Vulnerable Populations

Doña Ana County residents, particularly those suffering from chronic diseases and those who have limited access to parks and trails

Doña Ana County youth

Sample Pathway for HIA Report

Access to Parks Pathways



**Planning
issue**

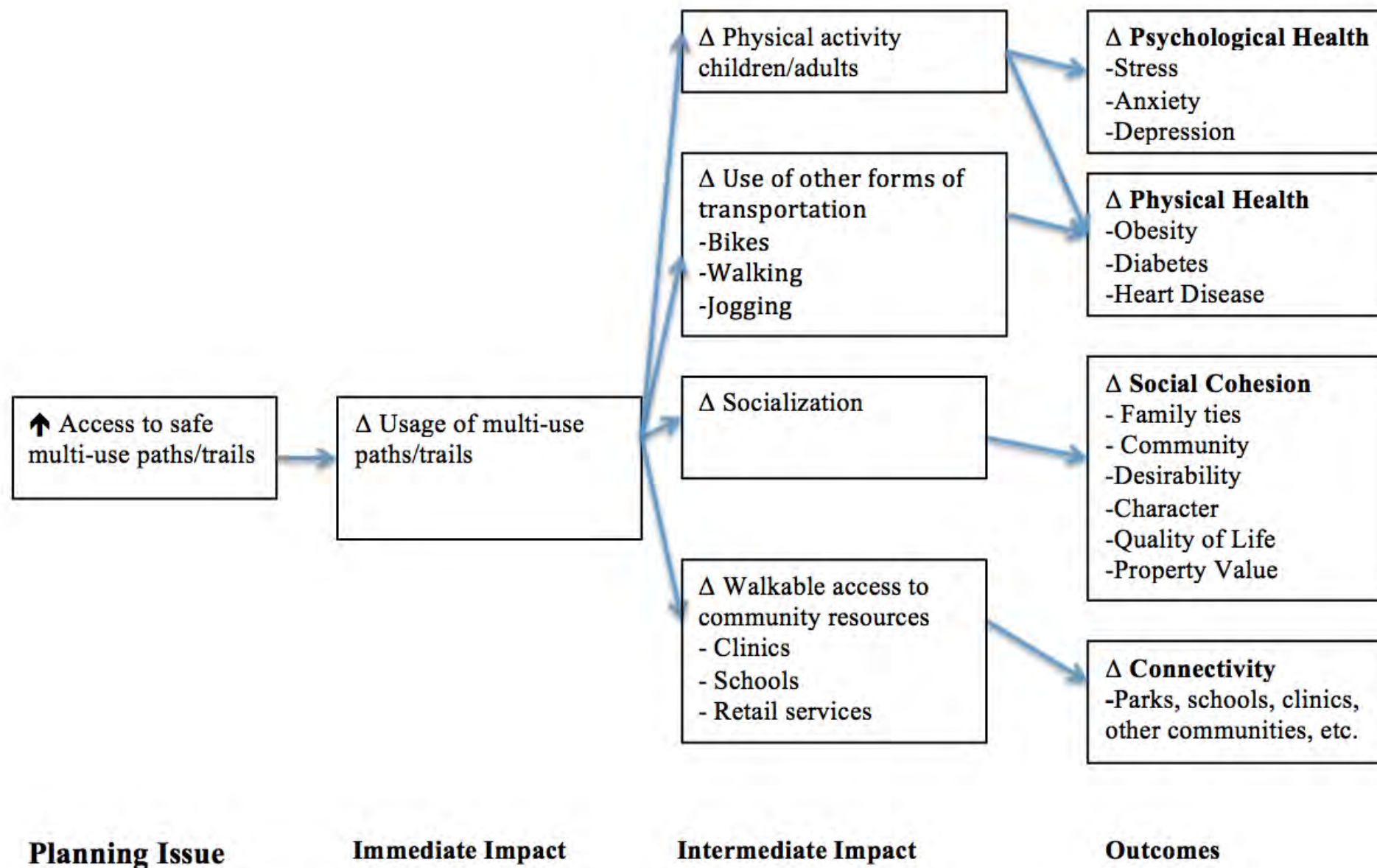
**Immediate
Impact**

Intermediate Impact

Outcomes

Sample Pathway for HIA Report

Access to Trails Pathways



Sample: Doña Ana County HIA

A set of research questions are generated based on pathway diagrams

How would changes to the county's comprehensive plan impact access to parks and trails?

How would changes in access to parks and trails impact community cohesion?

How would changes in access to parks and trails impact levels of physical activity and chronic disease among vulnerable populations?

What are the current barriers that local residents face in terms of access to county parks and trails?

Scoping Worksheet Example

Health Determinant: Access to Parks

Existing Conditions Research Question	Impact Research Question	Indicators <i>(how to measure the issue identified)</i>
How many parks and recreation areas are currently in the community?	How would shared-use agreements with schools impact access to parks and recreation areas for residents?	Parks Population and location of residents Number and location of schools
What is the current state of park facilities and amenities in Doña Ana County?	How would changes to the comprehensive plan impact the quality of facilities and amenities in local parks? How could this impact park use?	Quality of facilities (reports of issues, maintenance activity, etc.)

Questions

Preview of Scoping Exercises

1. Activity 1: Defining HIA Goals and Developing a 1 Page Case Study
2. Activity 2: Drawing a pathway diagram for each health determinant
3. Activity 3: Developing research questions for each health determinant using a scoping worksheet

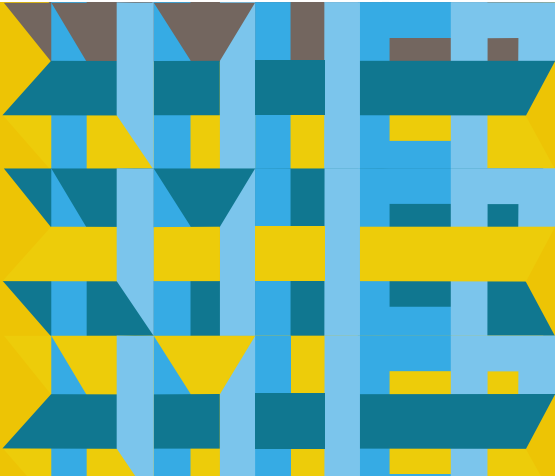
Activity 1: Developing Goals for your HIA

1. Confirm the proposed policy your HIA will focus on.
2. Define 2 goals for your HIA and how you will utilize the HIA in your coalition.
3. Identify 2-3 health determinants that will be impacted by your proposed policy decision.
4. Determine which populations and geographic areas will be most impacted by the proposed policy.
5. Determine who will start to compile information regarding your HIA (goals, proposed policy, health determinants, partners, etc.) into a 1 page case study.

Common HIA Goals

- Improve decision to account for health impacts
- Include health in the decision-making process
- Involve diverse stakeholders, including community members
- Build the capacity of stakeholders to use HIA

HIA Project	Goals
McKinley County HIA on uranium mining moratorium	<div>Increase awareness among decision makers and impacted communities of health impacts of uranium mining</div> <div>Highlight how the moratorium and other future policy could affect health of local communities</div> <div>Include community stories and voice alongside existing research</div>
Doña Ana County HIA	<div>Ensure health language is incorporated into the county’s Comprehensive Plan</div> <div>Inform broader discussion about health impacts of local policy</div>



Health Determinants

Which conditions (health determinants) could be impacted by the proposed decision in your case study?



See "Determinants of Health" handout in your binder

Poll: Which health determinants
will you be investigating
through your HIA project?

Impacted Populations and Geographic areas

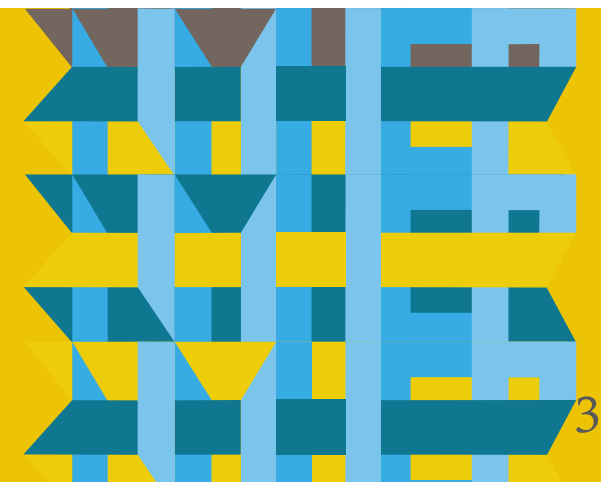
Which populations are most at-risk of being adversely affected by the proposed decision in your case study?

Which geographic areas do these community members live in?

Consider how community members most directly impacted will be engaged in the HIA process. It is critical that community members most directly impacted hold leadership roles throughout the process.

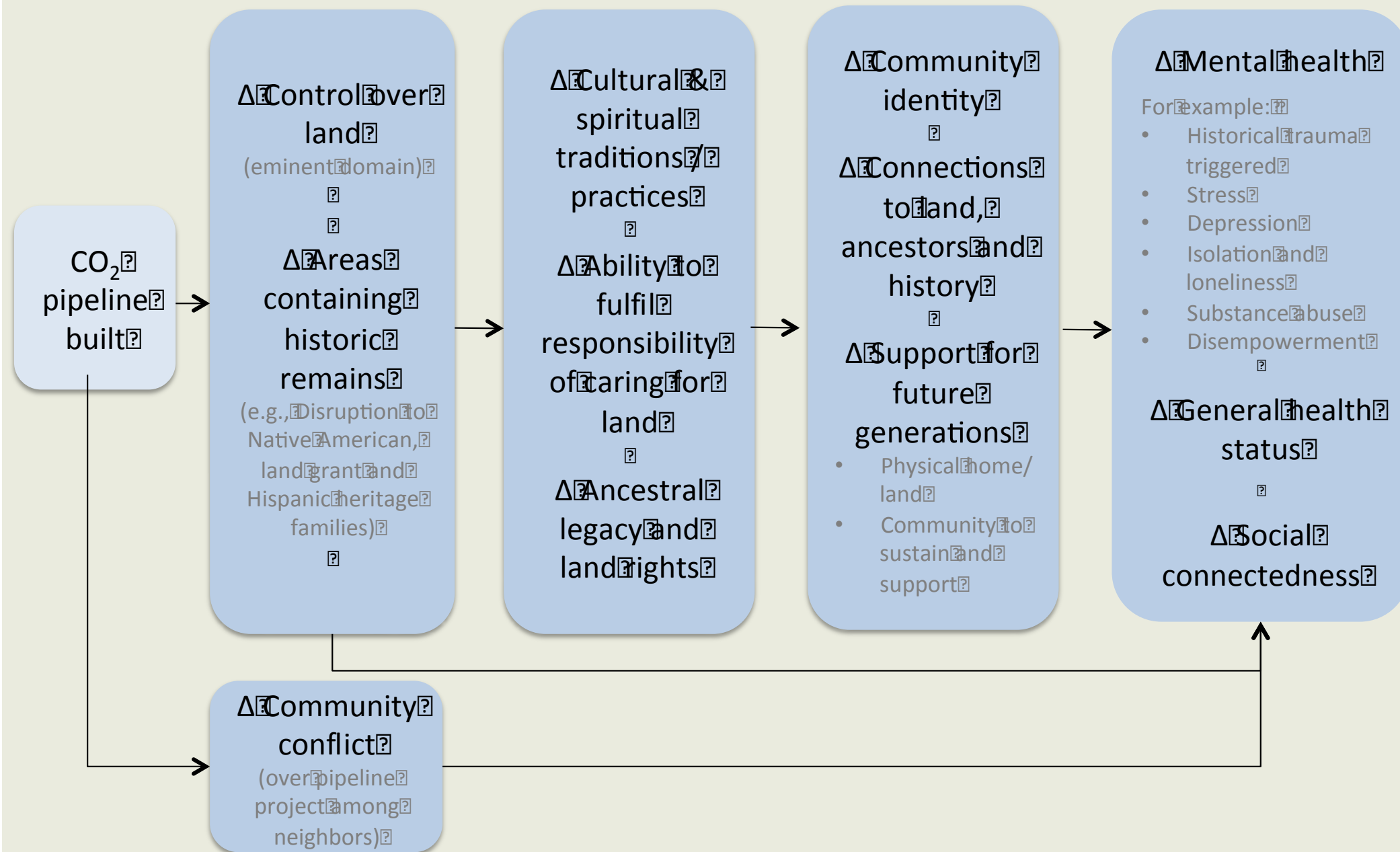
Impacted Populations and Geographic Area

Poll: Which populations will be impacted
through your HIA project?



Activity 2: Developing pathway diagrams

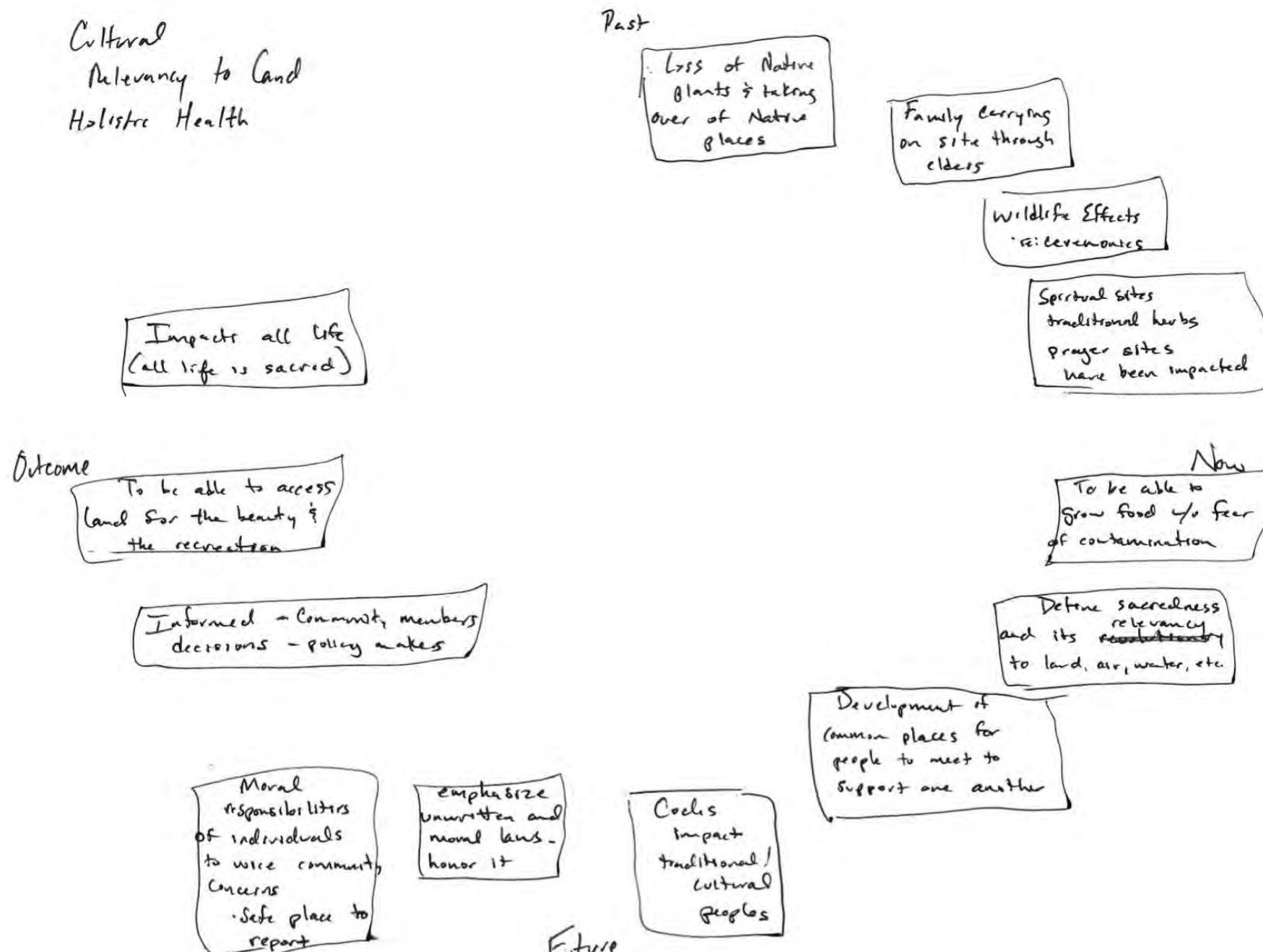
- Draw pathway diagrams for each health determinant from the proposed policy.
- Identify potential health outcomes resulting from your health determinant.
- On the right hand side of the pathway, please make sure you are illustrating potential health outcomes for vulnerable children.



Additional Pathway Diagram Example

See HIP's Tools & Resources webpage for more examples of pathways

Generating Pathway Diagrams



While pathways in most HIA reports are linear, they do not always start out this way. In scoping meetings for the McKinley HIA, stakeholders felt more comfortable discussing impacts of the proposed decision in a circular format

Activity 3: Completing the Scoping Worksheet

- Identify an “existing conditions research question”.
- Identify an “impact research question”.
- Identify the indicators.
- Identify the data sources for each indicator.
- Identify the methods that will be used.
- List high-medium-low priority for the research questions.
- List any special notes to keep in mind.

Scoping Worksheet

HIA Scoping Worksheet – Example

Project:	Freeway Expansion					
Health Determinant:	Air Quality					
Geographic Scope:	0-150m from freeway; 150-300m; County/Region					
Existing Conditions Research Questions	Impact Research Questions	Indicators	Data Sources	Methods	Priority	Notes
What are existing levels of air pollution?	Based on traffic model, how will the projected changes affect air quality? How would specific features of the proposal (e.g., carpool lanes) impact AQ?	Levels of some of the following: Carbon Black, NOx, SOx, DPM, PM2.5, PM10 Levels of above pollutants attributable to traffic on freeway Level of emitted NO2 Level of emitted ultrafine particles	Environmental Impact Assessment; AQ modeling; emissions inventories; local studies	AQ modeling; GIS mapping lit review	High	
What are current asthma rates compared to county and state? How many missed school days are currently attributable to asthma in the impacted areas?	How would changes in air quality resulting from the project be expected to impact asthma risk? How would changes in asthma rates be expected to impact missed school days?	Asthma prevalence, hospitalizations Days of missed school due to asthma	Health survey; hospital admissions data School district	Model using odds ratios from meta-analyses (e.g., Weinmayr) Qualitative description (lit review and review of available stats)	High	
How do demographics of populations living near air pollution sources compare to characteristics of people living elsewhere?	Will projected changes in air pollution exposure adversely impact people with social, economic, or education-related vulnerabilities?	Income, ethnicity/race, age data	Census	Qualitative description (lit review and review of available stats)	High	

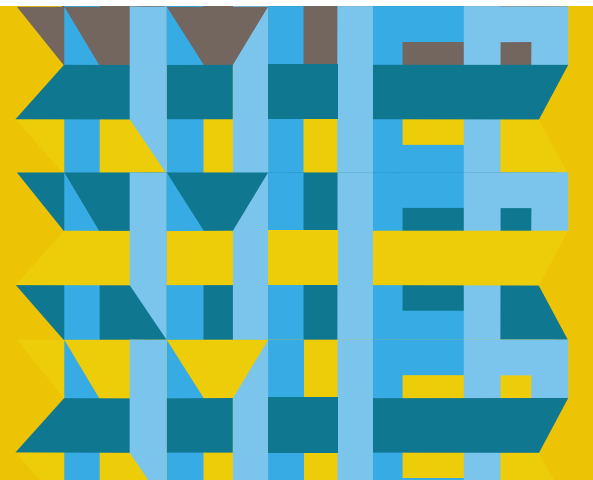
Human Impact Partners - 304 12th Street, Suite 3B Oakland, CA 94607 - 510.452.9442 - www.humanimpact.org

Scoping Worksheet

Scoping Worksheet for Health Determinant #1_____

HIA policy focus:						
Geographic Scope:						
Existing Conditions Research Questions	Impact Research Questions	Indicators	Data Sources	Methods	Priority	Notes

Discussion and Questions?



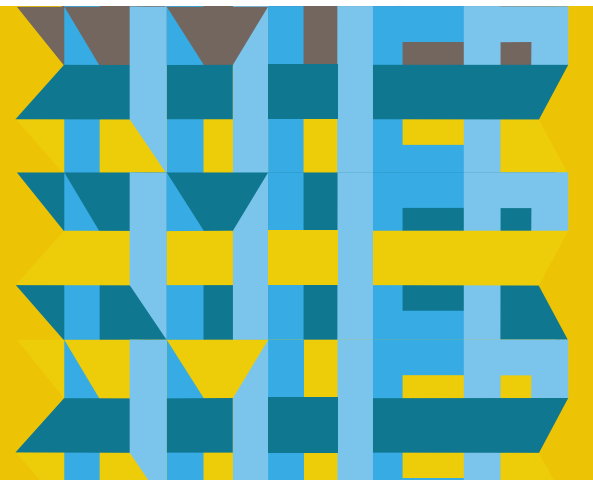
Wrap Up

Where can you find us and learn more?

Sign up to be a HEP member and/or for our newsletter at www.nmhep.org

Follow us on www.facebook.com/NMHEP

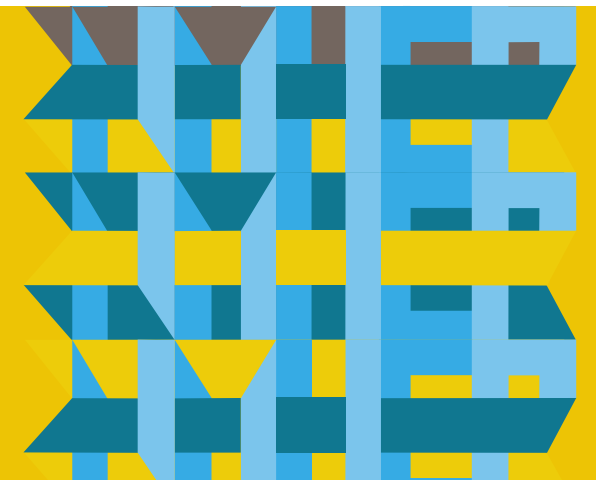
Please view HIA reports at <http://nmhep.org/resources/hia-reports/>



Wrap Up

Acknowledgements

Thank you to all the webinar participants, new HIA teams, guest HIA team, HIA TA Providers, and Human Impact Partners for the use of their materials and ongoing training.



Thank you!

