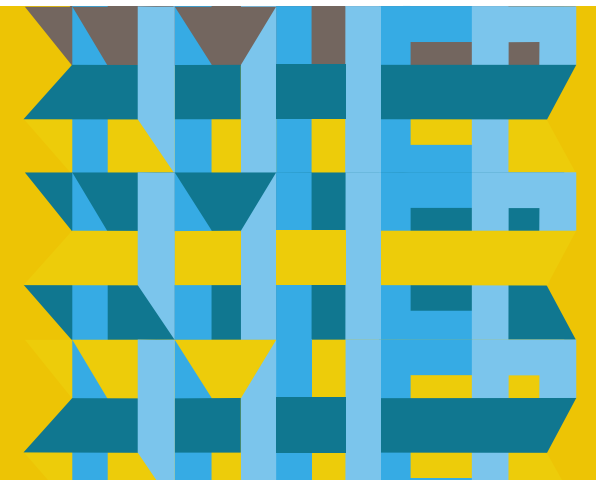


# Welcome

## Health Impact Assessment 101 Webinar





# Introductions

# Name, pronoun, and what is your weather?





# NEW MEXICO HEALTH EQUITY PARTNERSHIP

HEP  
is the  
COACH  
CHEERLEADER  
PROJECT  
manager  
CONNECTOR  
MENTOR

HELPING RESIDENTS AND  
COMMUNITY MEMBERS HOLD  
POLICY MAKERS  
ACCOUNTABLE!!

ELEVATE  
the  
COMMUNITY  
VOICE

WEB  
OF  
TRUST

OUR IMPACT

Policy impact

Alliances  
formed around  
a common  
ground

Leadership  
strengthened  
& POWER  
built

90 MEMBERS  
4 CORE PARTNERS

Creative &  
Accessible  
engagement  
Strategies

DIVERSE  
PEOPLE CAN  
PARTICIPATE

SUPPORT COMMUNITY-  
DRIVEN RESEARCH

HEP believes  
all people should  
have the opportunity  
to lead a healthy life,  
live in neighborhoods  
where children and families thrive,  
and have a say in decisions  
that impact their  
communities  
and lives

MY  
COMMUNITY

PROVIDE RESOURCES  
TO INCREASE  
ORGANIZATIONAL/  
ADVOCACY CAPACITY of  
3 PLACE-based  
TEAMS

MOVE  
ISSUES  
FORWARD

Moral  
Support!  
Coaching!

Logistics  
support  
for  
GATHERINGS

SUPPORT  
with  
COMMUNICATIONS,  
FINANCES,  
BUDGETING

EMPOWERING  
& RELEASING

Creating space for  
peer learning

MY  
VOICE

Local  
knowledge  
& expertise

Train  
the  
trainer

HLIA  
HEALTH  
IMPACT  
ASSESSMENT

Inform  
policy  
change

[www.nmhhep.org](http://www.nmhhep.org)



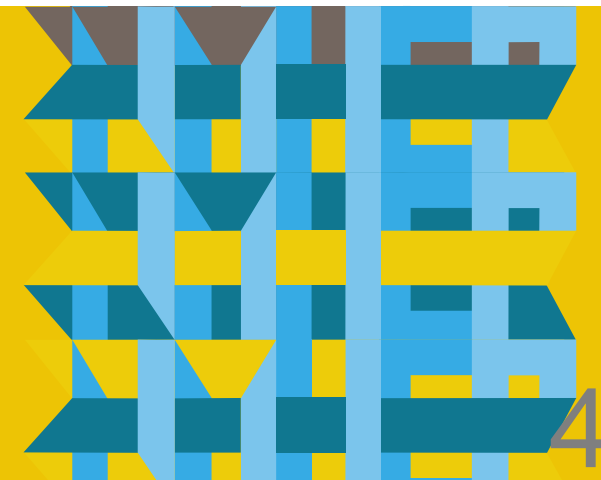
# Health Impact Assessment



Health is a state of complete physical, mental and social well-being and not merely the absence of disease or infirmity

*World Health Organization*

Many indigenous cultures extend the concept of health to include physical, mental, emotion, and spiritual dimensions, and define healthy living as being in harmony with the spirit world, with their community and with the land.



# Why Bring Health Into Decision Making?

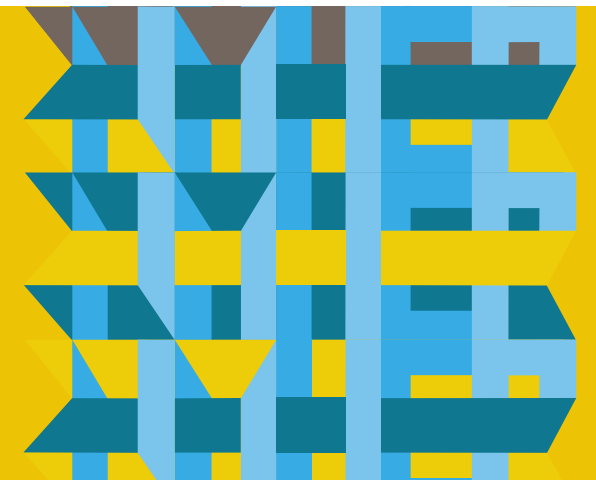
A health lens can provide information previously not considered.

A health frame can be persuasive.

Health is a shared experience.

Health is an indicator of quality of life.

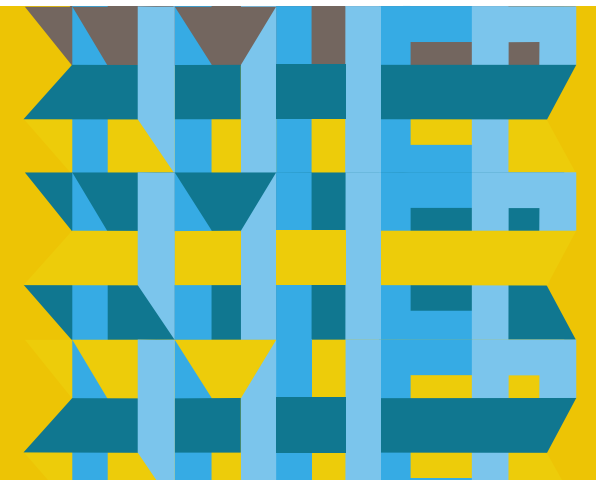
People are surprised and concerned by health inequities.

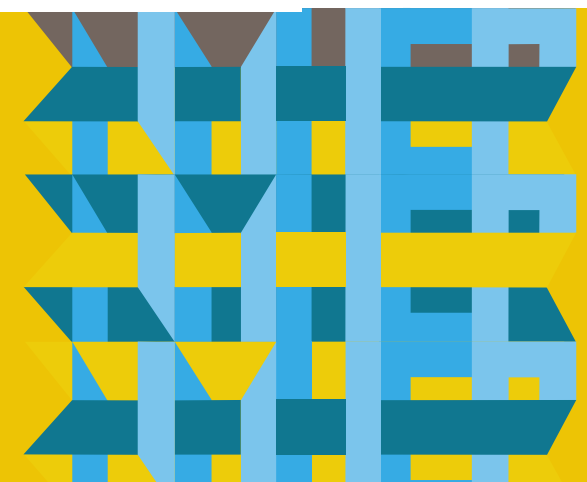


# HIA Purpose

Health Impact Assessment is a systematic process that:

- Determines the potential effects of a **proposed** policy or plan on the health of a population
- Centers the leadership and voices of community members
- Uses a variety of data sources and analytic methods (art, photo voice, surveys, etc.)
- Determines the distribution of those effects on specific populations (immigrants, refugees, Native Americans, etc.)
- Provides recommendations to decision makers





# HIA Addresses the Determinants of Health

*How does the proposed project, plan, policy*

*affect*

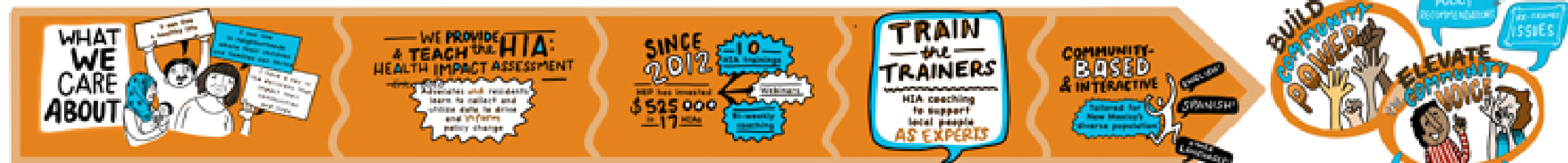
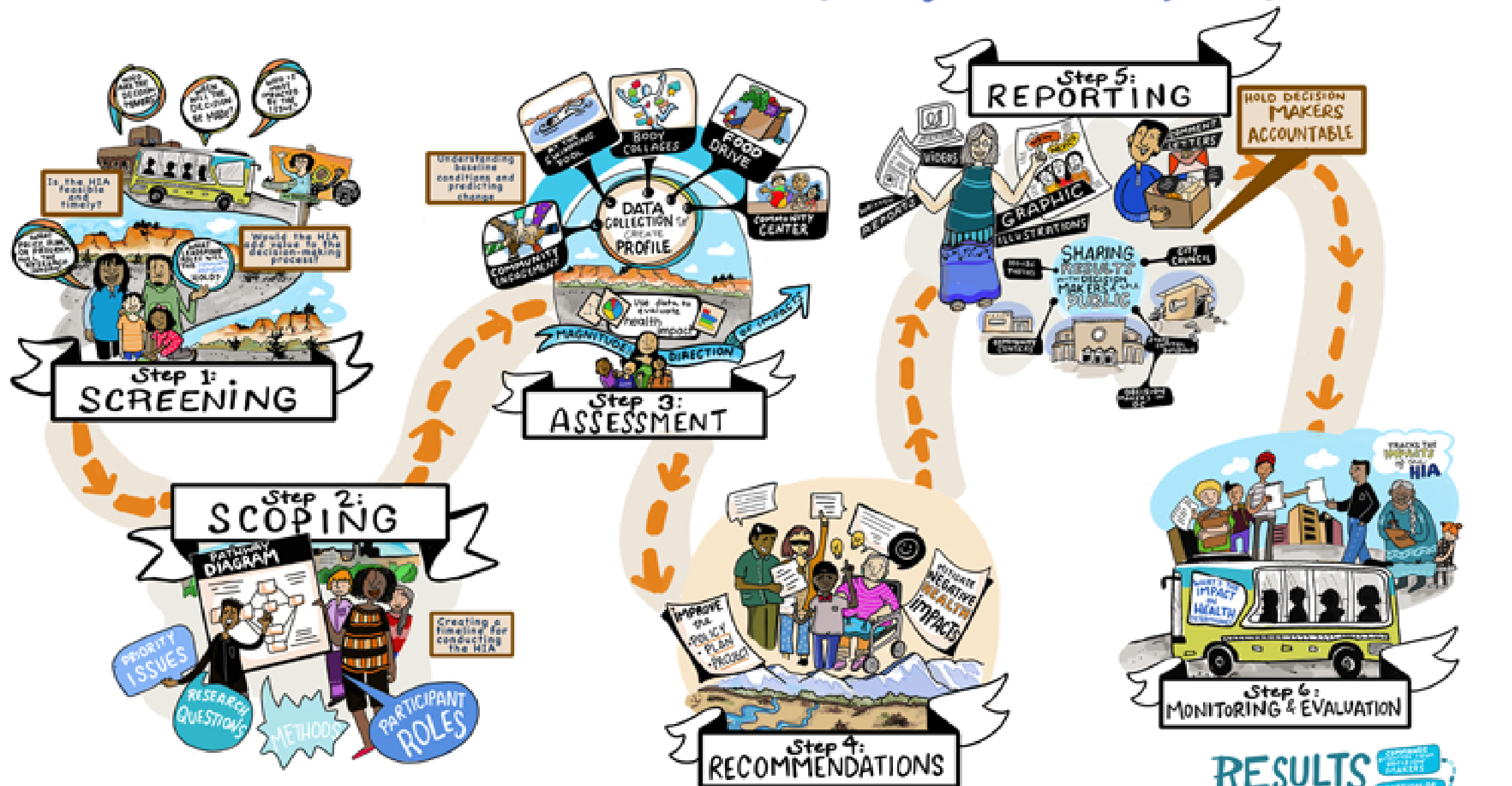


*lead to  
health outcomes*

*recommendations*

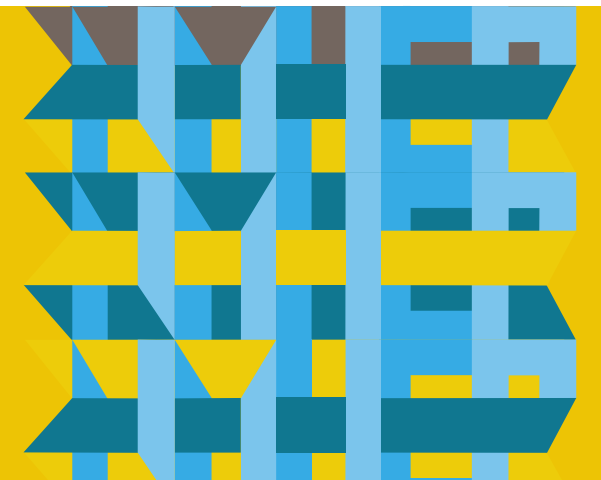


# HEALTH IMPACT ASSESSMENT



# HIA Steps

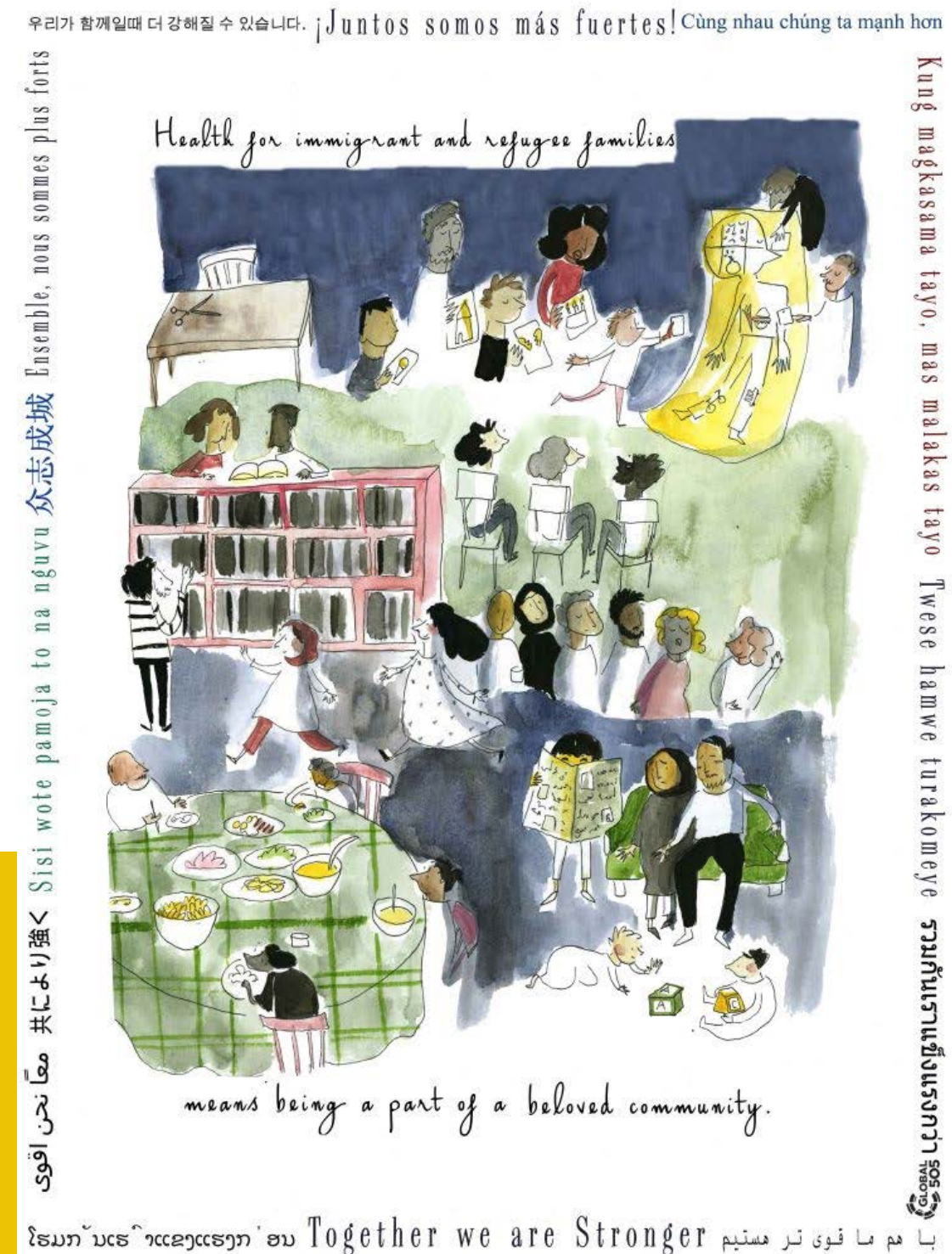
HIA Step	Description
Screening (selection)	Determines the need and screens the issues
Scoping (reach)	After screening the group determines 2-3 health issues, identifies research questions, and creates a workplan
Assessment (analysis)	Provides: 1) a profile of existing health conditions 2) evaluation of potential health impacts
Recommendations	Provide strategies to manage adverse health impacts and maximize benefits to health
Reporting	Includes: 1) development of the HIA report 2) communication of findings & recommendations
Evaluation & Monitoring	Tracks and evaluates: 1) the process of conducting the HIA 2) impacts on decision-making processes and implementation of the decision 3) impacts of the decision on health outcomes





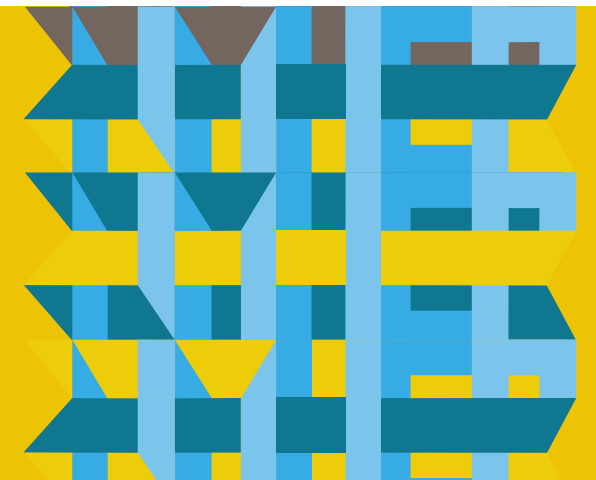
# Sample HIA Project & Dialogue

The health impacts of language and cultural access policies on immigrants and refugees in Albuquerque





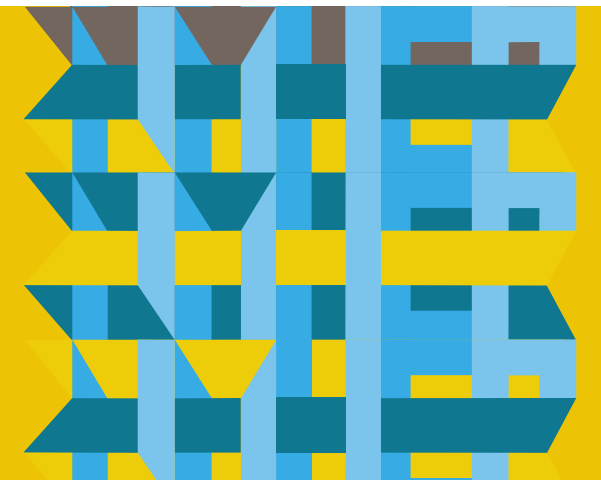
# HIA Lessons Learned



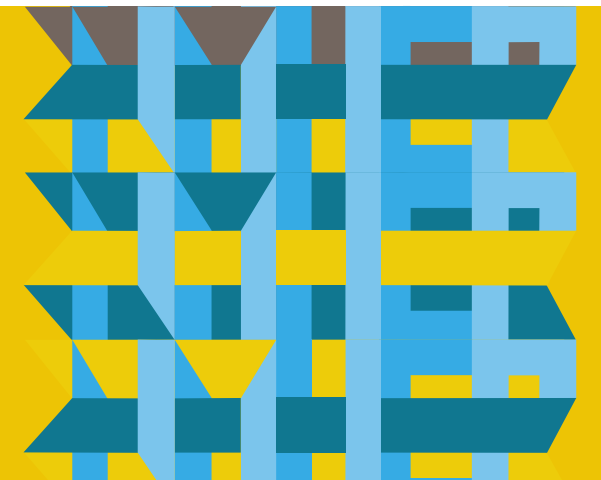


# Request for Proposals

- What will HEP provide?
- Eligibility
- Selection Criteria
- Submission Process



# Questions





# To Learn More About Us

Sign up to be a HEP member and/or for our newsletter at [www.nmhhep.org](http://www.nmhhep.org)

Follow us on Facebook or Instagram @nmhhep

View HIA reports at <http://nmhhep.org/research/hia-reports/>  
and HIA resources/RFP at <http://nmhhep.org/research/hia/>

If you have questions or would like feedback on your idea,  
please reach out to [jjensen@nmhhep.org](mailto:jjensen@nmhhep.org).

