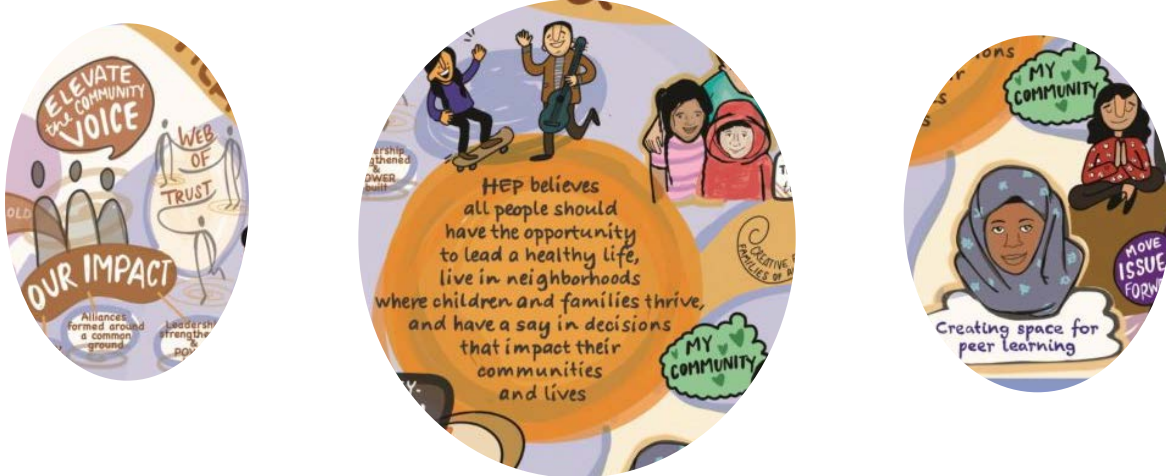




New Mexico Health Equity Partnership 2021 Year-End Highlights



Mission: Strengthen the capacity of communities to shift power relations and advocate for policy and systems changes to create healthy and just communities.

Shared value: What do we care about? Every New Mexican should have the opportunity to lead a healthy life, to live in neighborhoods where our children and families can thrive and to be able to have a say in the decisions that impact their communities and their lives.

Strategic celebrations!!!

Community driven research efforts to inform policy to advance health equity and racial justice.

- Invested in and provided technical assistance to Black Health New Mexico and McKinley Community Health Alliance to elevate issues connected to health in their communities.
 - Responding to community needs, Black Health New Mexico pivoted to invest in a Farm to Table program for the Black community and created a [film](#) to educate communities about the impacts of the program, the importance of food dignity, and the intersectional nature of social justice issues.
 - McKinley Community Health Alliance has continued its journey to engage the community, collect data, and synthesize information to examine the connection between a Housing First policy and household income/economic stability; childhood education; safety and broader health outcomes.



- Supported new follow up Health Impact Assessment (HIA) efforts (photovoice project, research brief, graphic video stories, etc.) for community partners ([Chainbreaker](#), [San](#)

[Miguel HIA team](#), [Santa Fe Indigenous Center](#)) to elevate their stories and make a more impactful case when communicating to decision makers and funders on housing justice, Indigenous health, and reintegration instead of incarceration.

- In partnership with Deconstructing Racism New Mexico, engaged regional partners and conducted preliminary steps towards beginning a Racial, Health, and Economic Impact Assessment in 2022.
- Finalized the [Indigenous HIA toolkit](#), with HEP partners and Roanhorse Consulting, and utilized it in trainings for a more culturally grounded tool; disseminated it broadly in New Mexico.

Critical connections and convening to advance health equity and racial justice.

-
- CREATE CRITICAL CONNECTIONS and LINKAGES
- We aren't TRADITIONALLY WORKED together!!
- Let's learn from each other
- Share best practices
- THE PEOPLE TOGETHER across DISPARATE GEOPOLITICS
- CREATIVE ENGAGEMENT STRATEGIES IN ALL AREAS AND INDUSTRIES
- CROSSING AND FLOODED



Collaborative funding to distribute resources to communities to advance health equity and racial justice.

- Doña Ana Communities United, McKinley Collaborative for Health Equity, and San Juan Collaborative for Health Equity addressed health equity issues important to them and offered community solutions. HEP supported these efforts with resources and virtual spaces for peer learning.
- Served as the Assistant Director for Con Alma Health Foundation's *Vaccine Rollout and Community Rebuild* effort to address the disproportionate impact COVID-19 has had on vulnerable populations in New Mexico. Con Alma awarded 27 vaccine rollout grants totaling \$600,000, promoting the equitable allocation, distribution, delivery, and access to vaccines. Community Rebuild grants are being reviewed.
- Served as the coordinator for Con Alma's *Family and Workers fund*. The project provides direct assistance to immigrants, families and communities impacted by the COVID-19 pandemic and creates awareness about structural barriers to their well-being. Con Alma awarded eleven grants totaling \$110,000.



Reflections to inform learning and sustainability to advance health equity and racial justice.

- Engaged in regular reflection and learning tied to HEP's activities and compiled learnings in an [evaluation report](#) shared widely with new learnings put into action.
- Conducted reflection sessions with HEP HIA teams, place-based partners, peer funders, steering committee members etc. to develop a [Harvesting of Insights](#) report. These learnings informed the development of HEP's new business model.