



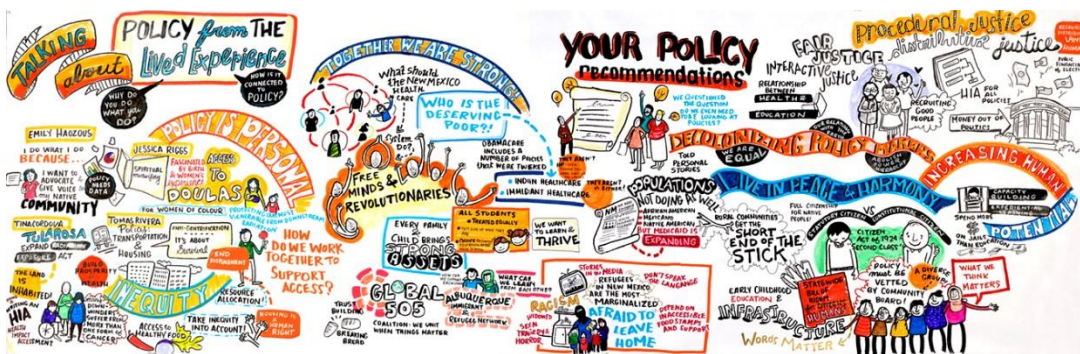
NEW MEXICO HEALTH EQUITY PARTNERSHIP

## Save the Date

September 28, 2016 at 2pm MST

& October 19, 2016 at 10am MST

## Planning and Design of Community- Focused Convenings



### Planning and Design of Community Focused Convenings

With the New Mexico Health Equity Partnership Team – Jinelle Scully, David Gaussoin, and Jessica Jensen

During this webinar participants will explore how to effectively design community-focused gatherings that are aligned with project values, facilitate peer learning, and promote cross-stakeholder collaboration.

**Audience:** This webinar is intended for non-profit staff, funders, government agencies, and community coalitions interested in planning and designing conferences for:

- Authentic dialogue around critical issues;
- Community engagement and trust building;
- Learning, ideation and innovation;
- Consensus building, collaboration and coordination; and
- Building leadership capacity.

### Attendees will learn how to:

- Create engaging and accessible gathering spaces;
- Lift up the strengths of staff, planning committee members, partners, and community;
- Engage in authentic dialogue around critical issues;
- Design conference sessions that push attendees to “think out of the box” and identify innovative solutions; and
- Bridge partnerships with community groups.

### Registration:

The webinar will be hosted on both September 28, 2016 at 2pm

<https://zoom.us/webinar/register/c57366f4c9d226b17510d14dfea9e911>

& October 19, 2016 at 10am MST

<https://zoom.us/webinar/register/e399079184984a1434538d7d4481ef37>

For more information please contact Jinelle Scully at [jscully@nmhep.org](mailto:jscully@nmhep.org)